

# Demographic Transition and Structural Transformation\*

Tania Barham

CU-Boulder

Randall Kuhn

UCLA

Brett A. McCully

Collegio Carlo Alberto

Patrick Turner

University of Notre Dame, IZA

April 21, 2025

## Abstract

We explore the effect of demographic transition on structural transformation. When fertility declines, a larger share of the population may remain in farming due to agriculture's reliance on a fixed factor of production, land. We test this hypothesis at the national, subnational, and household-levels. Abortion policy changes around the world in the last 60 years and across U.S. states in the 19th century, and a quasi-experimental family planning program provided to Bangladeshi households, generate plausibly exogenous variation in fertility. In each of these three empirical analyses, lower fertility raises the agricultural employment share. Improving human capital, however, can offset the effect of fertility declines on the agricultural employment share.

**Keywords:** Economic growth, fertility, human capital, industrialization.

---

\*We are grateful to Suresh Naidu, David Canning, Yuzuru Kumon, Francisco Javier Rodriguez Román, and Frédéric Robert-Nicoud for helpful discussions. We appreciate comments from Wookun Kim, Doug Gollin, Adriana Lleras-Muney, and Asger Wingender. We thank seminar participants at UCLA, Collegio Carlo Alberto, the University of San Francisco, the European University Institute, and the Free University of Bozen-Bolzano, as well as participants at numerous conferences and workshops for helpful comments. We are grateful to Antonio Curcio, Ilaria Malisan, Jessica Mancuso, Alec Truax, Sara Truesdale, and Elizabeth Sorensen Montoya for research assistance. We acknowledge financial support from CEPR STEG. McCully acknowledges financial support from CCPR's Population Research Infrastructure Grant P2C from NICHD: P2C-HD041022, CCPR's Population Research Training Grants T32 from NICHD: T32-HD007545, and the Institute on Global Conflict and Cooperation. The data collection for Bangladesh was generously funded by the National Institutes of Health, the Population Research Bureau, and the International Initiative for Impact Evaluation. All errors are our own.

# 1 Introduction

Economic growth is characterized by two fundamental processes: the demographic transition, in which fertility and mortality fall, and structural transformation, in which workers leave agriculture for manufacturing and service jobs. A large literature examines how growth and structural transformation drive demographic transition (Galor and Weil 1996, 2000; Chatterjee and Vogl 2018; Ager et al. 2020). Little is known, however, about how demographic transition drives structural transformation. Given farmers’ reliance on a fixed factor of production, land, a decline in population could result in more workers staying in agriculture (Malthus 1798; Lewis 1954).

Unified models of the growth process typically hold, however, that endogenous technological change will swamp the Malthusian force of diminished land congestion keeping workers in agriculture (Boserup 1965; Galor and Weil 2000). But if the pace of technological advancement is slowing (Bloom et al. 2020) or frictions restrict some countries’ access to the technological frontier (Gancia and Zilibotti 2009; Buera and Oberfield 2020), Malthusian forces may once again become salient. With fertility declining in virtually every country on earth today (Delventhal et al. 2021) and world population expected to peak within the next 60 years (United Nations 2024), understanding the impact of fertility decline on structural transformation is crucial.

Lower fertility may affect human capital, and therefore structural transformation, via the quality-quantity tradeoff (Barro and Becker 1989). If nonagriculture more intensively uses human capital, then an increase in human capital will raise nonagricultural employment. The net effect of a fertility reduction on structural transformation—depending on both the Malthusian force of land in agriculture and the quality-quantity tradeoff—is therefore ambiguous. We formalize this logic in a simple two sector model in Section 2.

Testing models relating fertility and structural transformation is challenging for three reasons. First, fertility changes endogenously with a region’s economic growth and structural transformation. Second, there may be a substantial lag between changes in fertility and resulting impacts, as cohorts must grow up before entering the labor market. This requires consistent data for a lengthy period of time. Third, understanding the mechanisms by which fertility affects structural transformation is difficult when using regionally aggregated data.

We test whether fertility drives subsequent structural transformation in three distinct, complementary empirical contexts. In each approach, we find that falling fertility slows down structural transformation. Hence, the population size effect dominates the quantity-quality induced human capital improvements. Our results imply that governments seeking to transform their economy away from agriculture should pair family planning programs with

investments in human capital.

We begin our empirical analysis by leveraging cross-country variation since 1960 in Section 3. We estimate an event study relating changes in abortion policies to the agricultural employment share. A policy which makes abortion more accessible, and thus reduces fertility rates, increases agricultural employment share by about 5 percentage points three decades later. This implies that the population size mechanism outweighs the strength of the child quality-quantity tradeoff channel.

The cross-country analysis has the advantage of estimating the key relationship of interest: how fertility changes affect an economy’s agricultural employment share in the face of general equilibrium effects, such as changes in wages and prices. Cross-country regressions, however, have well-known difficulties, including harmonizing data across countries (Durlauf et al. 2005). We therefore turn to a within-country analysis to address this shortcoming.

In our second empirical analysis, we estimate the long-run effect of abortion restrictions passed by U.S. states in the 19th century in Section 4. Conducting a within-country analysis avoids the issue of cross-country data harmonization. Event study estimates reveal that abortion restrictions accelerate structural transformation in subsequent decades. A policy which makes abortion *less* accessible, and thus increases fertility rates, decreases agricultural employment share by about 5 percentage points three decades later, consistent with our cross-country results.

The preceding two analyses rely on aggregate data. Hence, they preclude any analysis of mechanisms at the level of decision makers: households and individuals. At the cost of accounting for general equilibrium forces, we analyze a village-level intervention at the household and individual levels.

In our third empirical analysis, we estimate the long-run impact of a quasi-random intervention in Bangladesh that distributed modern contraception and childhood vaccines 50 years ago in Section 5. The intervention accelerated the demographic transition by first inducing a fall in birth rates inside the treatment area during the program period (Joshi and Schultz 2007). Several years into the program vaccines were rolled out, reducing early-childhood death rates and raising the cognitive abilities and education of treated cohorts (Barham 2012; Barham et al. 2021b). Treatment was assigned by village, with treatment and control villages well balanced across a wide range of pre-intervention characteristics. We leverage highly detailed microdata collected across four decades in rural Bangladesh to understand the long-run effect on structural transformation and the corresponding mechanisms of population size and the child quality-quantity tradeoff.

We find that the faster demographic transition induced by the program slowed down the movement of workers out of agriculture decades later. Treated households allocated a 19

percent higher share of work hours to agriculture, but 11 percent less to manufacturing.

We consider the two key channels emphasized in our model: population size and human capital. We find that household size is a crucial mechanism through which the program affects structural transformation. For every boy not born due to the family planning program, the average household’s fraction of work time spent in agriculture nearly triples, while the share of work time spent in the manufacturing sector falls substantially.

Second, households on average sent higher human capital sons to work outside of agriculture. We obtain quasi-exogenous variation in human capital by comparing those born during the intensive child health phase of the intervention to those born before it. Vaccines raised affected cohorts’ human capital (Barham 2012; Barham et al. 2021b). Treatment area men born during the intensive child health phase of the program worked more in the service sector where human capital returns are likely higher.

This paper contributes to a growing literature on the consequences of fertility decline for economic growth (Ashraf et al. 2013; Cavalcanti et al. 2021; Jones 2022; Hopenhayn et al. 2022).<sup>1</sup> Unified growth models emphasize that declining fertility raises per capita income growth by freeing up resources to invest more in human capital (the quality-quantity tradeoff) and raising the ratios of labor-to-capital and labor-to-land (Galor and Weil 2000; Galor 2005). Relative to previous work, we emphasize the role of the fixed factor of land in agriculture as a countervailing force against the growth-enhancing effects of fertility decline. We provide direct evidence that the Malthusian force of land in agriculture outweighs the offsetting effect of the quality-quantity tradeoff in keeping workers in agriculture as fertility falls.

We are the first to empirically establish a causal link leading from the demographic transition to structural transformation, two central features of economic development (Kuznets 1957). Many studies focus on how structural transformation and productivity growth lead to demographic transition (Greenwood and Seshadri 2002; Wanamaker 2012; Ager et al. 2020). One notable exceptions which explores how population growth shapes structural transformation is Leukhina and Turnovsky (2016). Gollin and Rogerson (2014) and Herrendorf et al. (2012) quantitatively explore the role of transportation infrastructure facilitating population movements and thereby structural transformation. These studies rely, however, on calibrated macroeconomic models and aggregate data moments, inhibiting clear causal identification.<sup>2</sup>

---

<sup>1</sup>Li and Zhang (2007) estimate the effect of fertility decline on economic growth in the context of China’s one child policy. Their identification strategy relies on regional changes in ethnic minorities, which itself is likely to be endogenous as workers migrate to faster growing regions.

<sup>2</sup>Fertility and agricultural employment share may comove due to changes in skill-biased technical change, which affect the returns to child quality investments (relative to quantity) and the returns to employment in agriculture.

We contribute to the literature on the child quality-quantity tradeoff by quantifying the net effect of fertility decline and the associated human capital increase on structural transformation. Consistent with [Rosenzweig and Zhang \(2009\)](#), we estimate that the endogenous human capital investment response to declining fertility is modest. A quantitative analysis by [Cheung \(2023\)](#) on the importance of fertility decline and the associated human capital rise does not feature land in agricultural production, and hence abstracts away from the Malthusian mechanism that we focus on in this paper.

## 2 Model

In this section we present a simple model of structural transformation. There are two sectors, agriculture and manufacturing, and two factors of production: land and labor. Overlapping generations live together in households in which parents decide the quantity and education of children. Parents enjoy engaging in sex, but can reduce the likelihood of having children by purchasing contraception. We consider the effects of reducing the cost of accessing contraception on human capital investment and agricultural employment share.

### 2.1 Setup

#### 2.1.1 Production

Consider a small open economy that trades agricultural and manufacturing goods with the world economy.<sup>3</sup> In total there are  $T$  units of land, which is only used in agriculture.

Production of agricultural output is Cobb-Douglas:

$$Q_{at} = A_{at} L_{at}^{\theta} T_a^{1-\theta} \quad (1)$$

where  $Q_{at}$  is the quantity of agricultural output at time  $t$ ,  $A_{at}$  is Hicks-neutral agricultural productivity,  $L_{at}$  is the quantity of labor employed in agriculture, and  $T_a$  is the quantity of land used in agriculture (equal to  $T$  in equilibrium).  $\theta \in (0, 1)$  is the labor income share in agriculture. Land rents are paid to absentee landlords.

Production in manufacturing is linear in labor:

$$Q_{mt} = A_{mt} h_t L_{mt} \quad (2)$$

---

<sup>3</sup>The small open economy assumption implies prices are exogenous and therefore unaffected by local demand. We discuss the implications of adding trade costs to our model at the end of Section 2.3 and in Appendix Section A.3. We also show in Table D.2 that the quasi-experimental intervention in Bangladesh that we study in Section 5 did not induce any changes in consumption shares across sector, suggesting that demand-side factors are not driving sectoral reallocations in our Bangladesh context.

where  $Q_{mt}$  is the quantity of manufacturing output,  $A_{mt}$  is Hicks-neutral manufacturing productivity,  $L_{mt}$  is the quantity of labor employed in manufacturing.<sup>4</sup> As in [Caselli and Coleman \(2001\)](#) and [Porzio et al. \(2022\)](#), per household human capital  $h_t$  only yields returns outside of agriculture.<sup>5</sup>

### 2.1.2 Households

To characterize households, we extend the model of [Strulik \(2017\)](#). Preferences are defined as

$$U = \log c_t^a + \delta \log c_t^m + \alpha \log n_t + \gamma \log w_{t+1} + \sigma \log s_t,$$

where  $w_{t+1}$  is each child's potential income when they enter the labor force in the following period,  $s_t$  is the amount of sex had by the household,  $\sigma$  is the desire for sex,  $n_t$  is the number of births per household,  $c_t^a$  is consumption of the agricultural good, and  $c_t^m$  is consumption of the manufacturing good per household.<sup>6</sup> We assume  $\alpha > \gamma$  to ensure parents have children even if they could be costlessly avoided.

Define the number of births as

$$n_t = \min\{s_t - \mu u_t, \bar{n}\}$$

where  $u_t$  represents the quantity of family planning technologies used. Households may use contraception or abortion to limit their childbearing.  $\mu$  is the effectiveness of family planning technologies such that a unit of  $u_t$  prevents the birth of  $\mu$  children. Sex is proportional to births according to some constant that we normalize to 1.  $\bar{n}$  is the biological maximum reproduction for a given female; in what follows, we consider only interior solutions.

Human capital is produced according to

$$h_{t+1} = A_{ht} e_{t+1} h_t,$$

where  $e_{t+1}$  is the time spent on educating each child and  $A_{ht}$  is exogenous human capital production productivity. Households have one unit of time per adult and therefore face the budget constraint

$$w_t[1 - (\phi + e_{t+1})n_t] = p_{ft}u_t + p_{at}c_{at} + p_{mt}c_{mt}$$

---

<sup>4</sup>We consider alternative manufacturing production functions in Appendices [A.1](#) and [A.2](#).

<sup>5</sup>A less restrictive assumption would allow human capital to boost output in both sectors, but more so in manufacturing. Doing so does not change the main predictions of the model.

<sup>6</sup>Note that because we have assumed a small open economy, introducing nonhomotheticity in the demand for agricultural goods would have no effect on our equilibrium results. [Strulik \(2017\)](#) in his appendix shows that Stone-Geary preference for consumption would not change the effect of reducing family planning price  $p_{ft}$  on fertility and education.

given child rearing costs  $\phi$  and price of a unit of the family planning technology  $p_{ft}$ . The world price of agriculture is  $p_{at}$  and of manufacturing is  $p_{mt}$ . Each household works a fraction of their time endowment equal to  $\ell_t = 1 - (\phi + e_{t+1})n_t$ . Aggregate labor supply is a product of the adult population in time  $t$ ,  $n_{t-1}$ , and the per adult labor supply  $\ell_t$ :

$$L_t = n_{t-1}\ell_t.$$

## 2.2 Equilibrium

Labor markets clear so

$$L_t = L_{at} + L_{mt}.$$

The equilibrium wage comes out of the manufacturing firm's marginal product:

$$w_t = p_{mt}A_{mt}h_t.$$

The equilibrium agricultural employment share is

$$\frac{L_{at}}{L_t} = \left( \frac{\theta p_{at}A_{at}}{p_{mt}A_{mt}h_t} \right)^{\frac{1}{1-\theta}} \frac{T}{L_t}. \quad (3)$$

Assuming an interior solution, each household's optimal choice of fertility and child education are as follows:

$$n_t = \frac{(\alpha - \gamma)\mu w_t}{(1 + \delta + \alpha + \sigma)(\mu w_t \phi - p_{ft})}$$

$$e_{t+1} = \frac{\gamma(\mu w_t \phi - p_{ft})}{(\alpha - \gamma)\mu w_t}$$

## 2.3 Effects of Abortion and Contraception Access

We assess the effect of the fertility transition on sectoral employment through the lens of our model. We consider a reduction of the price of the family planning technology  $p_{ft}$ . The price includes both monetary and non-monetary costs associated with accessing the family planning technology. Reducing  $p_{ft}$  decreases fertility and increases education of the next generation:

$$\frac{\partial n_t}{\partial p_{ft}} > 0, \quad \frac{\partial e_{t+1}}{\partial p_{ft}} < 0.$$

Hence both current human capital  $h_t$  and current adult population  $n_{t-1}$  are unchanged as a result of the program. The only contemporaneous variable that changes is labor hours,

$\ell_t$ :

$$\frac{\partial \ell_t}{\partial p_{ft}} = -(e_{t+1} + \phi) \frac{\partial n_t}{\partial p_{ft}} - n_t \frac{\partial e_{t+1}}{\partial p_{ft}}.$$

That is, the direction of the change in labor hours depends on the relative strength of quality-quantity tradeoff. On the one hand, parents have fewer children to raise and therefore less demand on their parenting time. On the other, parents invest more time educating each child. The net effect is theoretically ambiguous. Empirically, [Aaronson et al. \(2021\)](#) estimate that the effect of fertility on women's labor supply is negligible at low levels of development but significantly negative for more developed countries. [Lundberg and Rose \(2002\)](#) finds that men increase their labor supply with fertility. Hence, the aggregate net effect is also ambiguous but the small or offsetting estimated effects suggest that the magnitude may not be very large.

In subsequent generations, more accessible family planning technologies has two additional effects. First, human capital ( $h_t$ ) rises, thereby pulling workers into the manufacturing sector. Second, the adult population ( $n_{t-1}$ ) falls. The net effect on total labor supply is

$$\frac{\partial L_t}{\partial p_{ft-1}} = n_{t-1} \frac{\partial \ell_t}{\partial p_{ft-1}} + \ell_t \frac{\partial n_{t-1}}{\partial p_{ft-1}}.$$

Relative to the prior period in which only  $\ell_t$  may change, the land-labor ratio rises, increasing the returns to labor in agriculture, as seen in equation (3). The net effect of more accessible family planning technology on agricultural employment share depends on the relative strength of the human capital channel versus the labor supply channel.

We show that our predictions are robust to alternative production functions in Appendix A. In Appendix Section A.1, we show our results hold when adding an additional factor of production, imported intermediate inputs.<sup>7</sup>

We discuss when our results hold if trade is costly in Appendix Section A.3. If trade costs are sufficiently high, the economy becomes closed and must rely on local production. Hence, the food problem ([Schultz 1953](#)) becomes salient and reverses our baseline model's prediction: a larger population raises demand for agriculture, thus shifting a greater share of workers into that sector. Hence the relative closedness of the agricultural sector in many developing economies ([Gollin et al. 2007](#)) works against our hypothesized population size effect. If every country's agricultural sector was perfectly closed, in our model declining fertility would decrease agricultural employment share, so long as the per-household effect on

---

<sup>7</sup>One can instead think of this additional factor as capital when the economy is open to the global capital market. We further show in Appendix Section A.2 that our main results hold if we allow intermediate inputs and labor to be arbitrarily substitutable. Introducing capital to the model makes it intractable, as noted by [Galor \(2005\)](#).



labor supply  $\ell_t$  is sufficiently small. [Tombe \(2015\)](#), however, shows a wide range of openness among countries' agricultural sectors, including for developing countries. A growing literature emphasizes an open-economy perspective on structural change ([Uy et al. 2013](#); [Sposi 2019](#); [Fajgelbaum and Redding 2022](#); [Farrokhi and Pellegrina 2023](#); [Gollin et al. 2025](#)). Moreover, we show in our subsequent empirical analyses that the demographic transition slows down the movement of workers out of agriculture, implying that agricultural sectors are on average sufficiently open to drive open economy effects.

### 3 Cross-Country Analysis

We start to test our theory by looking at variation across countries in abortion policies and the agriculture employment share. The cross-country analysis has two main advantages. First, we establish that the relationship predicted by our theory holds even when accounting for general equilibrium forces at the country level, such as changing prices. Second, we can establish whether this relationship holds for a broad set of countries at different points on the development path and with widely varying cultural norms around fertility.

#### 3.1 Cross-Country Data

We construct a cross-country panel dataset of agricultural employment share and abortion policy changes. To measure agricultural employment share we rely primarily on [Wingender \(2014b\)](#), who compiles and harmonizes data for an unbalanced panel of 169 countries between 1900 and 2010. Additional data details are provided in [Wingender \(2014a\)](#).

We use abortion policy changes across countries between 1960 and 2006 collected by the United Nations Population Division following [Bloom et al. \(2001\)](#).<sup>8</sup> We collapse specific policy changes into an index that varies between 1 and 5 as in [Elías et al. \(2017\)](#).<sup>9</sup> A value of 1 indicates that there is no law regulating abortion; an index value of 2 indicates that abortion is prohibited unless it would save the mother's life; a value of 3 that abortion is only allowed to protect the mother's physical or mental health; a value of 4 that additionally abortion is allowed if there are fetal abnormalities and in the case of rape or incest; and a value of 5 indicates that abortion is freely permitted. Hence, a higher value of the index indicates that abortion is more accessible. 56 countries make at least one abortion policy change during the sample period; 6 countries experienced two abortion policy changes, with no countries experiencing more than two changes.

---

<sup>8</sup>The UN discontinued updating their abortion policy database in 2007.

<sup>9</sup>[Bloom et al. \(2009\)](#) instead construct a 7 point index.

### 3.2 Cross-Country Specification

Fertility rates and agricultural employment share are very likely endogenously determined, each influencing the other. For example, an improvement in nonagricultural productivity may pull workers away from the farm and raise the returns to human capital, inducing parents to switch away from child quantity and into child quality (Galor 2005). We therefore need an exogenous shifter of fertility rates which is uncorrelated with factors shaping the agricultural employment share, conditional on controls.

We leverage variation in country policy changes to abortion access. Specifically, we estimate an event study of the effect of abortion policies on the agricultural employment share. Our specification is

$$AES_{ct} = \alpha_c + \alpha_t + \sum_{\tau=T_0}^T \beta_{\tau} Abortion_{ct} + \epsilon_{ct} \quad (4)$$

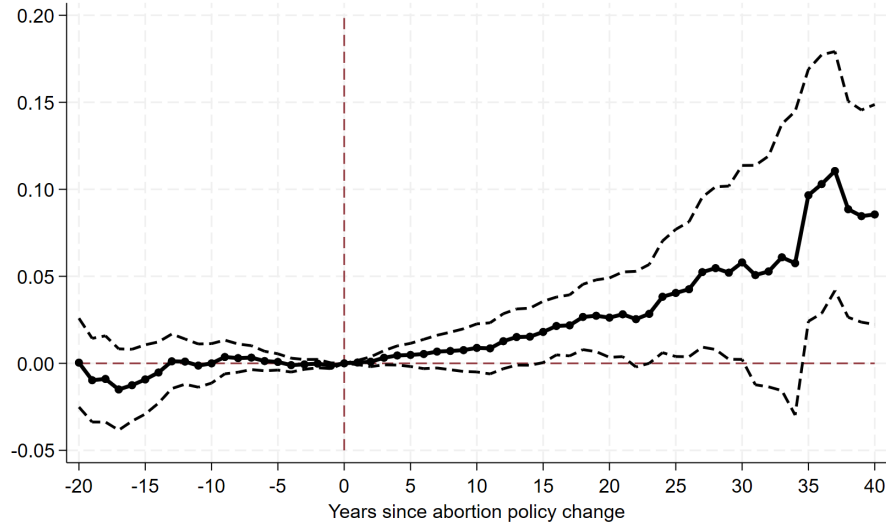
where  $AES_{ct}$  is country  $c$ 's agricultural employment share in year  $t$ .  $Abortion_{ct}$  is equal to the magnitude of the change in the abortion policy index in country  $c$  in year  $t$ .  $\beta_{\tau}$  then traces out the dynamic effect of abortion policy changes on the birth rate and agricultural employment share.  $\alpha_c$  is a vector of country fixed effects and  $\alpha_t$  a vector of year fixed effects. Given the continuous nature of the treatment—since multiple abortion policies may change at once, and abortion may become more or less accessible—we estimate equation (4) following De Chaisemartin and d'Haultfoeuille (2024).

### 3.3 Cross-Country Results

We show the results of estimating equation (4) in Figure 1, which shows the event study plot. We do not find evidence of pretrends. The effect of abortion policy changes on agricultural employment share takes a number of years to manifest, suggesting that the immediate effect of fertility reduction on labor force participation is modest. The average effect of a policy making abortion more accessible 15 to 40 years later is a 5 percentage point increase in agricultural employment share. Relative to a mean share of 0.37, this represents a 14 percent drop.

We also estimate the effect of abortion policy on the birth rate using equation (4). Appendix Figure D.2 shows the result. We do not find strong evidence of pretrends, with 8 of 10 pre-policy change coefficients statistically insignificantly different from 0. A relaxation of abortion restrictions reduces the birth rate immediately and persistently. The average cumulative effect of a one point increase in the policy index (corresponding to abortion becoming more accessible) reduces the birth rate by 0.33 children per 1,000 population. Relative to a

Figure 1: Effect of Abortion Policy Changes on Agricultural Employment Share



*Notes:* The figure shows event study coefficient estimates for the effect of abortion policy changes on the agricultural employment share. 95% confidence intervals depicted with standard errors clustered at the country level. Data on country-level agricultural employment shares 1960–2020 comes from [Wingender \(2014b\)](#). Abortion policy change database compiled by [Bloom et al. \(2009\)](#). Estimated using the Stata command `did_multiplegt_dyn` by [de Chaisemartin et al. \(2024\)](#).

mean birth rate of 30, this implies a 1.3% reduction. This magnitude is very close to the 1.1 percent decline estimated by [Bloom et al. \(2009\)](#), whose sample differs slightly from ours.

Our cross-country results therefore suggest that the demographic transition slows down structural transformation. This is consistent with the modest human capital effects driven by the quality-quantity tradeoff found by [Rosenzweig and Zhang \(2009\)](#) and [Bhalotra and Clarke \(2020\)](#). Hence, the population size effect dominates.

There are two main drawbacks to our cross-country analysis. First, data may not be directly comparable across countries, and may require various assumptions and imputations to harmonize (see, for example, [Behrman and Rosenzweig 1994](#) and [Durlauf et al. \(2005\)](#)). To address this concerns, we turn next to a within-country analysis. Of course, disaggregating is not without drawbacks of its own as smaller regions are less likely to influence prices and hence we may miss out on some general equilibrium effects that we captured in the cross-country analysis.

## 4 Regional U.S. Analysis

We next consider a subnational analysis of the long-run effect of abortion policy changes on agricultural employment share. We do so leveraging the tightening of abortion access in the United States during the 19th century.<sup>10</sup>

As surgical abortions became more prevalent in the U.S. in the 1800s, a backlash followed, driving widespread implementation of abortion restrictions across the country. [Lahey \(2014\)](#) finds that the passage of these laws was not correlated to the immigrant population share, literacy rate, pre-law child-to-woman ratio, and, importantly for the present study, the urbanization rate. [Lahey \(2014\)](#) estimates that the abortion restrictions increased fertility by 5 to 15 percent.

To measure agricultural employment share, we use the decadal data compiled by [Craig and Weiss \(1998\)](#) for the period 1800 to 1900. These data are drawn from decennial census tabulations computed by the U.S. Census as well as estimates based on the Census microdata for the 1870 to 1900 waves. Imputations were necessary, especially in earlier census periods.<sup>11</sup> The dependent variable drawn from these data is the ratio of male agricultural workers ages 10 and older to the total population.<sup>12</sup> We provide additional details on the data and their construction in Appendix Section [B.1](#).

We estimate the causal effect of abortion restrictions on agricultural employment share over time. Specifically, we estimate the staggered dynamic difference-in-differences following [De Chaisemartin and d’Haultfoeulle \(2020\)](#). Each abortion policy’s passage is associated to the subsequent decennial census wave.

Figure [2](#) shows the resulting event study plot of our estimates. There are no differential trends in agricultural employment share prior to the implementation of abortion restrictions. After restrictions are in place, a negative effect on agricultural employment share begins to emerge, becoming statistically significantly negative four decades later. The delayed effect is consistent with the fact that affected cohorts must age into the labor market, and mirrors our findings in the cross-country estimates shown in Section [3](#). The implication is that increased fertility—a slower demographic transition—speeds up the movement of workers

---

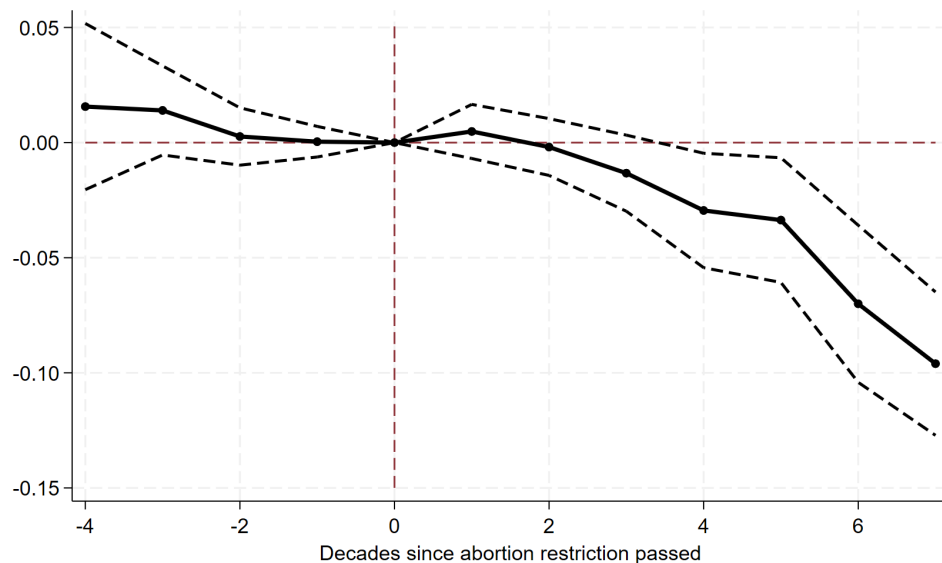
<sup>10</sup>Other U.S. reproductive policy changes may come to mind but are not suitable for our analysis. The liberalization of abortion access in the 1960s and 1970s yields too little across-state variation over time, as most states were treated all at once with the 1973 *Roe v. Wade* Supreme Court decision. Regarding the ‘power of the pill,’ [Myers \(2017\)](#) argues that the rollout of oral contraception across the U.S. had little impact on fertility.

<sup>11</sup>We redo the estimation using the 1850–1900 full count census waves to construct agricultural employment share and our results do not change; see Appendix Figure [D.3](#). See Appendix Section [B.1](#) for more on the imputations implemented by [Craig and Weiss \(1998\)](#).

<sup>12</sup>We focus on male employment since female farm employment, primarily unpaid, was substantially undermeasured in official Census tabulations which focused on paid work ([Ngai et al. 2024](#)).

out of agriculture. In terms of the magnitude, agricultural employment share falls by almost 5 percentage points four decades after abortion was restricted, a 27% reduction. If the average abortion policy reduced fertility by 10%, the midpoint of the estimates by [Lahey \(2014\)](#), then the resulting long-run fertility-agricultural employment share elasticity is 2.7.

Figure 2: Effect of Abortion Restriction on Agricultural Employment Share, U.S. States



*Notes:* Data on state-level agricultural employment shares 1800-1900 comes from [Craig and Weiss \(1998\)](#). Timing of abortion restrictions come from [Lahey \(2014\)](#) and [Lahey and Wanamaker \(2025\)](#). 95% confidence intervals depicted with standard errors clustered at the state level. Estimated using the Stata command `did_multipligt_dyn` by [de Chaisemartin et al. \(2024\)](#).

We conduct two additional robustness checks of our main results. First, Appendix Figure [D.4](#) shows the event study plot when excluding states that passed abortion restriction laws prior to 1840. Laws passed prior to 1840 were often part of larger bills and not enforced until much later. While fewer states and years are included, we still see a statistically and economically significantly negative effect of abortion restrictions on agricultural employment share four decades later.

Second, given the westward expansion of the U.S. throughout the 19th century, we cannot observe the agricultural employment shares for all states for all Census waves. In our baseline, we included an unbalanced panel of states. To gauge the degree to which our sampling composition of states drives our results, we show the event study plot when including only states that we observe in 1800 in Appendix Figure [D.5](#). As in our baseline analysis, we observe no pretrend and a significantly negative effect of abortion restrictions three plus decades after passage. Because we only observe 20 states as of 1800, we bootstrap the clustered standard errors.

Next, to better understand how our proposed mechanisms work at the level of decision makers, we turn to a quasi-experiment in Bangladesh in which richly detailed household and individual level data are available. While a household-level analysis necessarily misses general equilibrium effects, it can still be informative about how households respond to shocks to local fertility.

## 5 Bangladesh Quasi-Experiment

The Maternal and Child Health and Family Planning (MCH-FP) program was introduced in the Matlab subdistrict in Bangladesh in 1977 to treatment villages by icddr,b (formerly known as the International Centre for Diarrhoeal Disease Research, Bangladesh). The program included family planning and maternal and child health services.

### 5.1 Program Details

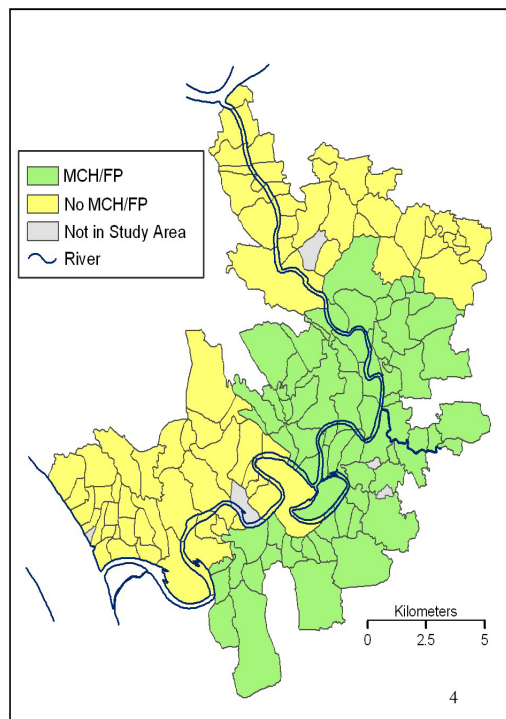
Program interventions were rolled out over time starting with access to and advice on using modern contraception for women and tetanus toxoid vaccines for pregnant women in 1977. Intensive child health interventions started in 1982 with the measles vaccine and other child health interventions were introduced in 1985 including vaccination against measles, tetanus, pertussis, polio, and tuberculosis were distributed for children starting in 1985.

In the comparison area, then-standard government health and family planning services were available, but family planning services were only available at clinics, not in the home, and some of the childhood services, such as vaccinations, were not readily available in clinics until 1989 or later, providing an experimental period, 1977–1988, to evaluate the program.

The MCH-FP program was introduced to half of Matlab, with the remaining half serving as an untreated comparison. We depict treatment and comparison villages in Figure 3. The program covered about 200,000 people in 149 villages, with the population split evenly between the two areas. The program was placed in a single block of contiguous villages, with a block of comparison villages on two sides. The block design was intended to reduce potential contamination of the comparison area with information about the family planning interventions (Huber and Khan 1979) and spillovers from positive externalities generated by vaccination. The comparison villages were socially and economically similar to the treatment villages and geographically insulated from outside influences (Phillips et al. 1982). Treatment and comparison blocks were chosen in order to balance the average distance to transport and health infrastructure between the blocks. We thus refer to the placement of this intervention as quasi-random and draw further support for our identification strategy from the evidence

shown in Section 5.3.1 of pre-program similarities between treatment and comparison areas.

Figure 3: Map of Matlab Study Area



*Notes:* The map plots villages in the Matlab subdistrict in Bangladesh. Villages in green are within the treatment area while those in yellow are in the comparison area. Taken from Barham (2012).

The program was successful in driving rapid take up of the two key interventions: family planning and the measles vaccine (see Appendix Figure D.6). Prior to the program, the contraceptive prevalence rate for married women 15–49 was low (less than 6 percent) in both the treatment and comparison areas. It rose by over 25 percentage points in the treatment area in the first year, then rose steadily thereafter. Contraceptive use rose much more slowly in the comparison area. The measles vaccination rate rose substantially to 60 percent after it was introduced in the second half of the program; rates for vaccination coverage for diseases targeted by the program increased throughout the program duration. Rates for the comparison area were much lower throughout the period. We provide additional details about the MCH-FP in Appendix Section C.

The staggered rollout of program components led to differential treatment of children depending on their year of birth. However, children of all ages may have experienced some effects as parents shift child-specific investments in response to the program. Moreover, the program affected all participants in the labor market, as the intervention significantly affected cohort size.



Previous research demonstrates that the MCH-FP program had significant effects on fertility and human capital. [Barham et al. \(2021a\)](#) show that completed family size was between 0.52 and 0.67 smaller in the treatment than the comparison area depending on the number of reproductive years a woman was exposed to the MCH-FP Program. [Joshi and Schultz \(2007\)](#) use a different research design and also find schooling increased for boys.

Regarding human capital, [Barham \(2012\)](#) finds that adolescent boys born during the vaccine phase of the program in the treatment area experienced significant improvements in height, cognitive functioning, and schooling. There was no effect on those born prior to the introduction of intensive child health interventions for those born between 1977-1981. In a follow-up paper, [Barham et al. \(2021b\)](#) show that effects on height and education persisted into adulthood for those born between 1982-88. The persistence of the effect on human capital is strongest for affected men.

## 5.2 Data and Treatment Assignment

**Data Sources.** We draw on the extraordinarily rich data available for the Matlab study area. We focus on household- and individual-level sectoral employment. To measure these outcomes, we use both the 1996 Matlab Health and Socioeconomic Survey wave 1 (MHSS1) ([Rahman et al. 1999](#)) and the 2012–2015 Matlab Health and Socioeconomic Survey wave 2 (MHSS2).<sup>13</sup> Questions changed significantly between survey rounds, and the MHSS2 offers a richer set of questions about sectoral employment (see Appendix Section [B.2](#) for more details on our sectoral employment classification). In particular, we can measure the share of months worked by sector in MHSS1 but the share of hours worked by sector in MHSS2.

MHSS2 was conducted between 2012 and 2014 and has low attrition rates, with the loss of less than 10 percent of the target sample.<sup>14</sup> Respondents were tracked throughout Bangladesh and intensive efforts were made to interview international migrants and difficult-to-track migrants when they returned to the study area to visit family. International migrants not interviewed in Matlab were instead contacted by phone.

We use two supplementary data sources: periodic censuses in 1974 and 1982 ([icddr, b 1974, 1982](#)), and 1974–2014 Matlab demographic surveillance site (DSS) data on the universe of vital events (e.g., births, marriages, deaths, in and out migrations) collected by the International Center for Diarrhoeal Disease Research, Bangladesh ([icddr, b](#)). The MHSS1

---

<sup>13</sup>

<sup>14</sup>The MHSS2 is a panel followup of all individuals in the MHSS1 primary sample and their descendants. The MHSS1 primary sample is representative of the study area’s 1996 population, but does not include individuals who migrated between program start and 1996. To address this unrepresentativeness, MHSS2 also includes individuals born to an MHSS1 household member between 1972 and 1989 who had migrated out of Matlab between 1977 and 1996, which we refer to as pre-1996 migrants.



and MHSS2 are a panel of a random sample of households from the study area, while the census and DSS data cover the entire study area. A key feature of all these data is that individuals can be linked across different data sources over time by a unique individual identifier. There are few, if any, other study sites that have similarly rich data availability to allow for this type of long-term evaluation.

We provide additional details about the Matlab data in Appendix Section [B.2](#).

**Analysis Sample and Attrition.** We consider two primary units of analysis. In our baseline estimation, we look at households, the unit at which decisions about member’s employment are typically made in Bangladesh. Moreover, households often jointly make migration decisions for individual members. Because household composition may change over time in response to the MCH-FP, we consider 1996 MHSS1 households as our unit of household analysis. That is, we aggregate MHSS2 households into the household in which survey respondents resided in 1996. Household composition at this early stage is unlikely to be shaped by the program since the children born during the program were not yet of age to form their own households. Only 0.5 percent of MHSS1 households have no members who can be tracked to the MHSS2 survey round.

When assessing the role of human capital in the MCH-FP’s total effect, we analyze employment outcomes at the individual level. The sample of individuals includes those who were randomly selected for individual interviews in an MHSS1 primary sample household or were a pre-1996 migrant into Matlab. Including death and any other type of non-response, the attrition rate is 7 percent. This is a low attrition rate compared to other long-term effects studies with shorter follow-up periods despite a migration rate of approximately 60 percent for men (25 percent international) in this highly-mobile population.

**Intent-to-Treat and Baseline Variables.** Access to the MCH-FP program was based on the village of residence of the individual/household during the program period. We cannot use the area where the household or individual lived at the time of survey or even when some of the individuals in our individual sample were born because the household may have moved into the village after the start of the program, and therefore post-1977 location might be endogenous ([Barham and Kuhn 2014](#)). We determine treatment at the household and individual level by exploiting the Demographic Surveillance System and census data, tracing back an individual in the MHSS2 2012–2014 survey back through their family tree to find where the household head lived prior to the program.

We create an individual-level intent-to-treat (ITT) indicator by tracing each individual back to their 1974 village of residence to determine eligibility status. If the person was not

alive then, we trace back the residency of their earliest known household head to 1974. The ITT variable takes the value of 1 if the 1974 census-linked household head was living in a village in the treatment area in the 1974 census or migrated into a village in the treatment area from outside Matlab between 1974 and 1977 (using the DSS), and 0 otherwise. At the household level, a household is considered treated if the household head in the 1996 MHSS1 survey is considered treated based on the individual-level trace back described above.

## 5.3 Empirical Strategy

We now discuss how we leverage the quasi-experimental variation induced by the MCH-FP program to estimate the causal effect of the program on structural transformation. The placement of the program was balanced across a wide-range of pre-intervention covariates, providing support for an identification strategy that relies on estimating single-difference equations.

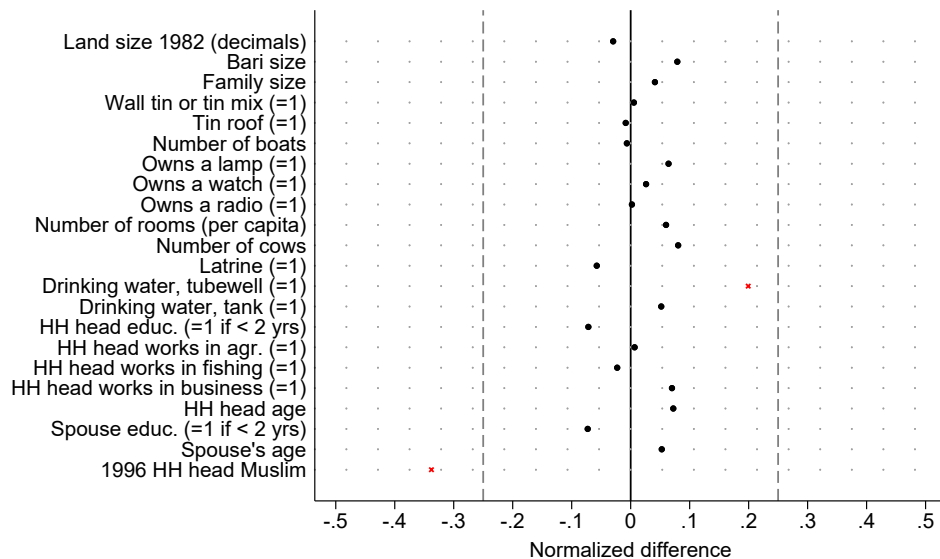
### 5.3.1 Baseline Balance and Trends

Because our identification strategy uses variation between treatment and comparison villages, we now show that pre-intervention characteristics were well balanced between these two areas. Prior studies have shown that the treatment and control villages are extremely well-balanced across a range of variables. Importantly, balance holds across several important dimensions including mortality rates, fertility rates, and pre-intervention household and household head characteristics (Koenig et al. 1990; Menken and Phillips 1990; Barham 2012; Joshi and Schultz 2013). In addition, migration stocks and flows were similar between the treatment and comparison area at the start of the program and through to 1982, for a cohort of individuals most likely to migrate at the start of the program, showing good baseline balance (Barham and Kuhn 2014). Barham et al. (2023) further show that for men born between 1977 and 1988, the labor market outcomes for their antecedent households were similar in 1974 and the trends were similar in the early years of the program between 1974 and 1982. Finally, Barham (2012) also shows that cognitive functioning, height, and education were similar across the treatment and comparison areas in 1996 for those who were old enough that their human capital and height were not likely to have been affected by the program.

Much of the previous literature examined baseline balance at the individual level. We further explore the baseline balance between the treatment and comparison area at the household level in Table 2 using 1974 census data. We depict the normalized differences in means (difference in the means divided by the standard deviation of the comparison area) of preintervention household characteristics in Figure 4. Appendix Table D.1 presents

means for the treatment and comparison group separately and the differences in means between the two group. The normalized difference provides an indication of the magnitude of mean differences, since a small difference in means can be statistically significant with large sample sizes (Imbens and Wooldridge 2009). Normalized differences bigger than 0.25 standard deviations are generally considered to be substantial. In Figure 4, any difference which is statistically significant at the 5% level is indicated with a red X.

Figure 4: Baseline Balance in Normalized Differences



*Notes:* The chart plots normalized differences in baseline variables. Each variable, unless otherwise specified, is measured using the 1974 census. The normalized difference is the difference in means divided by the comparison area's standard deviation. Any difference between treatment and comparison average which is statistically significant at the 5% level is indicated with a red X.

Differences in means are insignificant at the five percent level for all variables except whether the household head is Muslim and a dummy for the household using tubewell water for drinking. Since we test balance across 22 variables it is not surprising that a few are statistically different. With the exception of religion and tubewell water for drinking water, the normalized differences are less than 0.12 standard deviations demonstrating that the differences that do exist are relatively small. In our main specification, we control for all baseline variables.

The difference in tubewell access is close to the cut off at 0.20 standard deviations. There is widespread groundwater arsenic contamination in the tubewells in Bangladesh (Chowdhury et al. 2000) and arsenic is a health concern and has been shown to reduce IQ among school aged Bangladeshi children (Wasserman et al. 2006). Barham (2012) explores the potential

for tubewell access to bias estimates of the program’s effect on human capital and does not find any evidence for this. In sum, our baseline balance results mimic previous research and show that the two areas are similar across a wide variety of household and household head characteristics.

### 5.3.2 Empirical Specification

To examine the effect of the program on sectoral employment and agricultural outcomes we take advantage of the well-balanced treatment and comparison areas and use a single-difference intent-to-treat (ITT) models. We estimate the household-level specification,

$$Y_h = \omega_0 + \omega_1 T_h + \zeta X_h + \varepsilon_h \quad (5)$$

where  $T_h$  is an indicator for whether household  $h$  is considered treated (as defined in Section 5.2) and  $X_h$  is the vector of demographic and baseline characteristics detailed in Table D.1. We cluster standard errors by the village of the household head of  $h$  or his antecedents in 1974.

## 5.4 Main Results

We first estimate the effects of the MCH-FP on the share of work time spent in each sector at the household level. Results are shown in Table 1. We separate the estimates into medium-run effects (Panel A) measured as of the 1996 MHSS1 survey, and long-run effects (Panel B) measured as of the 2012–2015 MHSS2 survey. The dependent variable in panel A is the share of months spent per year in each sector; in panel B, the dependent variable is the share of annual work hours spent in each sector.

As of 1996, 19 years after the MCH-FP program started, we find no significant effect of the program on sectoral employment, as shown in Panel A. The estimated treatment effect is -0.2 percentage points (SE=2.2). The effect of the program on non-agricultural employment is similarly small, with an estimated effect of 0.9 p.p. (SE=2.2).

Next, we turn to the long-run effects of the MCH-FP, 35 years after it started. Panel B of Table 1 reports our results at the time of the 2012–2015 MHSS2 survey. The MCH-FP raised the share of household adults working in agriculture by 3.9 p.p. (SE=1.4 p.p), representing a 19 percent increase over the comparison area (column 1). The share of household members in manufacturing fell by 2.4 p.p. (SE=1.4), a 12 percent fall relative to comparison households (column 2). In services, we find a very small effect of -0.7 p.p. (SE=1.9), a 1.4 percent reduction relative to comparison households (column 3). Hence, the MCH-FP program

Table 1: ITT Effects of MCH-FP on Work Time Shares by Sector: Household-Level

	MHSS1 (1996)		MHSS2 (2012–2014)		
	(1)	(2)	(3)	(4)	(5)
	Agriculture	Non-agricultural	Agriculture	Manufacturing	Services
Treatment	-0.003 (0.022)	0.011 (0.022)	0.039*** (0.014)	-0.024* (0.014)	-0.010 (0.018)
% chg. rel. to mean	-0.5	3.0	18.7	-12.2	-2.0
Mean	0.68	0.36	0.21	0.20	0.48
Baseline controls	Y	Y	Y	Y	Y
Embankment control	Y	Y	Y	Y	Y
Observations	2534	2534	2484	2484	2484

*Notes:* The table presents estimates of equation (5) for outcomes at the MHSS1 household-level. Variable means refer to the comparison group. Standard errors are clustered by the 1996 household head’s pre-program village. Columns (1) and (2) measure outcomes in the 1996 MHSS1, while Columns (3) through (5) measure outcomes in the 2012–2015 MHSS2. MHSS1 dependent variables are the share of working months in the year in which household members could work allocated to each sector. MHSS2 dependent variables are the share of hours worked by sector within the household. See Appendix B.2 for more details on how we classify workers into sectors. Due to changes between survey waves, sectors are constructed differently in the MHSS1 and MHSS2, and therefore are not directly comparable. \*, \*\*, and \*\*\* denote statistical significance at the 10%, 5%, and 1% levels, respectively.

reduced the speed of structural transformation.

We separately explore the MCH-FP’s effect on the extensive margin of farming and land ownership. Appendix Table D.5 reports the estimates. The program had negligible effects on farming in 1996 (columns 1–2). In particular, treated households were no more likely to farm than comparison households in 1996 (column 1). We also do not detect any statistically significant medium-term effect of the program on the number of acres owned per capita (column 2).

By contrast, the program induced treated households to remain in farming relative to control households. By 2014, treatment area households were 3.2 percentage points more likely to farm relative to comparison area households (column 3), consistent with our theoretical predictions. Households in both areas owned a similar number of acres per member (column 4).

Given the importance of entrepreneurship for development (McMillan and Woodruff 2003; Buera et al. 2011, 2021), we explore whether the patterns observed in employment are matched by sector-specific entrepreneurship. The results are reported in Appendix Table D.3. Columns 1 through 3 show the same pattern as in Table 1: increased agricultural enterprise founding, less in manufacturing, and no change in service entrepreneurship.

Given the importance of large firms, especially factories, in driving structural change and growth (Buera and Kaboski 2012), we also explore how the MCH-FP affected employment

across firm types in columns 4–6 of Appendix Table D.3. Employment at factories among treated households lagged behind comparison area households (columns 4 and 5), as did employment at large firms (column 6).

Next, given the importance of rural-to-urban migration in the development process (Lagakos 2020; Lagakos et al. 2023), we explore its role in shaping our baseline estimates. We re-estimate equation (5) by sector, but further split the dependent variable of work hours share by rural and urban location of employment. We report results in Appendix Table D.7, with the effect on hours worked share in urban areas reported in columns 1–3, and in rural areas in columns 4–6. Our main results are driven by treated households engaging more in rural agriculture and less in urban manufacturing relative to comparison households, underlining the importance of rural-to-urban migration in structural transformation in Bangladesh.

**Robustness.** We explore the robustness of our main results above to variations in sampling, specification, and variable construction.

We assess the concern that information spillovers along the border of the treatment and control zones may reduce our estimated effect. To do so, we restrict our sample to those living in a village prior to the intervention which has a centroid within 3km of the border. In Panel B of Appendix Table D.6, we show that our results are very similar in magnitude to our baseline estimates when applying this restriction.

Given our finding in Section 5.3.1 that Muslims are disproportionately represented in control villages, we re-estimate our main results using only Muslim households. We find that results are virtually unchanged with this sample restriction, as shown in Panel C of Appendix Table D.6. Since Matlab is about 85% Muslim, we do not have sufficient statistical power to estimate program effects for the Hindu population on its own.

Finally, we address one other asymmetry between treatment and control areas: the only urban center in the study area, Pourashava, exists in the treatment area. In Panel C of Appendix Table D.6, we show that our results are largely unchanged when we remove households who resided in Pourashava prior to the intervention.

## 5.5 Mechanisms

We take advantage of the richness of the household data from Matlab to examine the mechanisms driving the main effects. The model outlined in Section 2 posits two key mechanisms which may work in opposite directions: population size and human capital.

### 5.5.1 Family Size

We start by testing how household size shapes our results, a key mechanism highlighted by our theoretical model. Fauveau (1994), Joshi and Schultz (2013), and Barham et al. (2023) have all found significant effects of the MCH-FP in reducing fertility. We also estimate the effect of the program on the number of men and women born during the experimental period, with results shown in Table D.4. Consistent with earlier research, we find the program reduced household size. In particular, we find the program reduced the number of males per household aged 24 to 34 by 16 percent, and decreased the number of females per household in the same age range by 11 percent.<sup>15</sup>

Next, to understand how population pressures within the household contributed to structural transformation, we estimate how the number of male children per household born during the experimental period affected those children’s later-life sectoral employment choices. We focus on males because of their stronger labor market attachment. In particular, we estimate an equation of the form

$$Y_h = \alpha_0 + \alpha_1 \text{Num. males age 24 to 34}_h + \gamma X_h + \epsilon_h \quad (6)$$

Because the number of males born during the experimental period is an outcome of the program, we instrument for *Num. males age 24 to 34<sub>h</sub>* using the treatment dummy.

We present our results in Table 2. Consistent with the model of Section 2, larger households have a smaller share of their adults working in agriculture (column 1). One more male born during the program period reduces the share of household work time spent in agriculture by nearly 40 percentage points. Conversely, larger households are more likely to have a member working in manufacturing (column 2) or services (column 3), though the effect is less precisely estimated for services.

### 5.5.2 Human Capital

The simple model outlined in Section 2 posits that an increase in human capital will draw workers out of agriculture. We test that theoretical prediction leverage the rollout of the vaccine arm of the MCH-FP and cross-cohort variation in exposure.

Past research on the effects of the MCH-FP by Barham (2012) and Barham et al. (2021b)

---

<sup>15</sup>The difference in number of 24-34 year olds by gender is statistically indistinguishable. The effect size on fertility is smaller than what is reported by Joshi and Schultz (2013) and Barham et al. (2023). This is because for the present estimation at the household level, we are not subsetting to families most likely to have children, i.e., by the age of the household head. Therefore, we have some households, for example, with exclusively older individuals in the MHSS1 who had no children, and this drives down the average effect we estimate.



Table 2: ITT Effects of MCH-FP on Long-term Work Hour Shares by Sector and Household-Size: Household-Level

	(1)	(2)	(3)
	Agriculture	Manufacturing	Services
No. males aged 24–34	-0.260** (0.113)	0.165 (0.108)	0.065 (0.117)
% chg. rel. to mean	-125.9	82.2	13.4
Mean	0.21	0.20	0.48
First-stage F-stat.	11.2	11.2	11.2
Baseline controls	Y	Y	Y
Embankment controls	Y	Y	Y
Observations	2484	2484	2484

*Notes:* The table presents 2SLS estimates for outcomes measured in the 2012–2015 MHSS2 aggregated at the MHSS1 household-level. Variable means refer to the comparison group. Standard errors are clustered by the 1996 household head’s pre-program village. The dependent variable is the share of hours worked by sector within the household. See Appendix B.2 for more details on how we classify workers into sectors. \*, \*\*, and \*\*\* denote statistical significance at the 10%, 5%, and 1% levels, respectively.

have found pronounced effects on human capital for the cohorts born between 1982 and 1988 and negligible effects for those born between 1977 and 1981. Effects were strongest among men. In what follows, we therefore take as given that cohorts born into the vaccine arm of the MCH-FP (that is, between 1982 and 1988) experience a significant human capital boost relative to other cohorts.

We estimate a single-difference equation at the individual level of the form:

$$Y_i = \alpha_{y(i)} + \gamma_1(T_i \times \text{Born}_i^{77-81}) + \gamma_2(T_i \times \text{Born}_i^{82-88}) + \gamma_3(T_i \times \text{Born}_i^{\text{Pre}-77}) + \nu X_i + \epsilon_i \quad (7)$$

where  $T_i$  is an indicator for whether  $i$  is treated as defined in Section 5.2;  $\alpha_{y(i)}$  is a set of indicator variables for  $i$ ’s birth year; and  $X_i$  is the vector of pre-intervention demographic and baseline characteristics detailed in Table D.1.<sup>16</sup> We cluster standard errors by the 1974 village of  $i$  (or  $i$ ’s antecedents if  $i$  was not born by 1974).

The coefficients  $\gamma_1$ ,  $\gamma_2$ , and  $\gamma_3$  represent the intent-to-treat single-difference coefficients of interest. In particular, they capture the difference in conditional means for the outcome for the relevant age group.  $\gamma_1$  captures the effects of the family planning and maternal

<sup>16</sup>We additionally control for dummy variables indicating whether  $i$  was born (i) prior to the intervention starting in October 1977, (ii) during the first phase of the intervention October 1977 to February 1982, and during the second phase of the intervention March 1982 to December 1988. Because we define our cohort dummies  $\text{Born}_i^{77-81}$ ,  $\text{Born}_i^{82-88}$ , and  $\text{Born}_i^{\text{Pre}-77}$  using these year-month cutoffs, they are not collinear with the vector of birth year cohort dummies  $\alpha_{y(i)}$ .



health interventions combined with any spillovers of having younger siblings exposed to the intensive child health interventions, and  $\gamma_2$  is the combined effect of all program interventions, including the childhood vaccination programs.  $\gamma_3$  captures any indirect spillover effects of the program on older generations. For each cohort, we also report the cohort’s mean outcome in the comparison area, and the percent change relative to the cohort comparison mean.

Table 3 reports results at the individual level among men.<sup>17</sup> We find that, consistent with our household-level estimates, treated individuals increase the share of hours worked in agriculture (column 1) and reduce it in manufacturing (column 2).

Table 3: ITT Effects of MCH-FP on Long-term Work Hour Shares by Sector: Individual-Level

	Share hours by sector			
	(1)	(2)	(3)	(4)
	Agriculture	Manufacturing	Services	Hours worked
Treatment $\times$ Born 1982–1988	0.01 (0.02)	-0.07** (0.03)	0.06 (0.04)	-33.14 (83.64)
Treatment $\times$ Born 1977–1981	0.05** (0.02)	-0.04 (0.03)	-0.03 (0.04)	-61.78 (88.74)
Treatment $\times$ Born Pre-1977	0.04* (0.02)	0.00 (0.01)	-0.03 (0.02)	-117.09* (63.34)
% chg. (1982–88)	16.6	-27.5	11.2	-1.1
% chg. (1977–81)	64.1	-20.8	-5.4	-1.9
% chg. (Pre-1977)	12.9	1.5	-6.1	-4.1
Comparison mean (1982–88)	0.08	0.25	0.51	3040.13
Comparison mean (1977–81)	0.08	0.21	0.59	3185.37
Comparison mean (Pre-1977)	0.29	0.10	0.52	2857.27
Observations	4744	4744	4744	4744

*Notes:* The table presents estimates of the effect of the MCH-FP on 2014 outcomes for men at the individual level. Means by age group refer to the comparison area. Standard errors are clustered by pre-program village. Regressions are weighted to adjust for attrition between the MHSS1 and MHSS2 surveys. All variables control for the baseline controls listed in Table D.1 as well as erosion exposure. The dependent variable in columns (1) through (3) is the fraction of total hours worked by sector. See Appendix B.2 for more details on how we classify workers into sectors. Employment shares do not sum to 1 for two reasons. First, we do not report results for two small sectors, construction and mining. Second, a small set of respondents do not work and are coded as spending 0 percent of their time working in each of the given sectors. \*, \*\*, and \*\*\* denote statistical significance at the 10%, 5%, and 1% levels, respectively.

There is, however, considerable heterogeneity in program effects across cohorts. To in-

<sup>17</sup>We show results for women, who work much less than men, in Appendix Table ??.

interpret these differences across cohorts, recall that the 1977–81 cohort in the treatment area only directly experienced the effects of smaller family sizes via the contraception arm of the MCH-FP. By contrast, the cohorts born between 1982 and 1988 experienced both smaller family sizes and improved early-life health from vaccinations, which translated into higher later-life human capital (Barham 2012; Barham et al. 2021b).

We find that men born during the human-capital building phase of the program, between 1982 and 1988, worked more in the service sector and less in manufacturing (first row of coefficients). However, this increase in service sector employment was offset by reductions in the share of hours worked by all other cohorts of men (column 3). These other cohorts of men (born before 1982 or after 1988) increased their agricultural employment. Our results can be understood to the extent that the returns to human capital are higher in the service sector than in agriculture or manufacturing, and that families optimally allocated sons to sectors based on their human capital.

### 5.5.3 Agricultural Adjustment

We next examine household-level effects of the program on agriculture. Since treated households are smaller, less family labor is available for use on the farm. Farming households may therefore switch into growing less labor-intensive crops. We estimate the effect of the MCH-FP on crop choice and show the results in Figure Table D.1. The program induced a shift towards crops which produce more revenue per unit of labor input. Roughly put, farmers shifted away from rice and into potatoes.

We finally assess whether observable measures of farm productivity change as a result of the program. With the human capital rising due to the vaccine component of the MCH-FP, farmers may raise their per-acre farm productivity if they increasingly use more complex inputs. As we show in Appendix Table D.8, we see no evidence of the program raising farm productivity per acre.

Our proxy for per acre productivity is revenue and profit per acre. To compute the value of output, we first need data on crop prices. Lacking farmgate prices for each household in the MHSS2 data, we instead draw upon the Bangladesh statistical yearbooks for 2012 through 2014. These yearbooks list prices at the variety level (e.g., coarse paddy boro or fine paddy boro), not the crop level (e.g., paddy boro). Hence we take prices in two ways: either the minimum price within crop across varieties, or the maximum.

We estimate the effect of the MCH-FP for the subset of households which grow crops. In columns 1 and 2 we look at the effect on potential revenue per acre, while we estimate the effect on profits per acre in columns 3 and 4. Across all outcomes, we can not statistically rule out a null effect. This result is consistent with our individual-level estimates in Table

3 which shows that the men whose human capital was improved most by the program (i.e., were born during the vaccine arm of the MCH-FP) left agriculture to work in services.

## 6 Conclusion

Fertility decline is an essential process by which countries escape the “Malthusian trap” of excess population growth, economic stagnation and poverty [Galor \(2012\)](#). Yet technological progress raising the returns to human capital, and thus the investments in children by parents, is necessary to achieve sustained growth. In this paper, we show that fertility decline without sufficient accompanying technological advancement slows down structural transformation out of agriculture. We demonstrate this empirical relationship in varying contexts, using distinct sources of exogenous variation and levels of aggregation.

Our findings do not suggest that developing countries should avoid investing in family planning policies. Instead the modest effects of fertility decline on slowed structural transformation can be offset by investment in human capital. Policymakers should therefore take care to pair family planning programs with education and public health investments that raise human capital.

## References

- Daniel Aaronson, Rajeev Dehejia, Andrew Jordan, Cristian Pop-Eleches, Cyrus Samii, and Karl Schulze. The effect of fertility on mothers' labor supply over the last two centuries. *Economic Journal*, 131(633):1–32, 2021.
- Philipp Ager, Benedikt Herz, and Markus Brueckner. Structural change and the fertility transition. *Review of Economics and Statistics*, 102(4):806–822, 2020.
- Quamrul H Ashraf, David N Weil, and Joshua Wilde. The effect of fertility reduction on economic growth. *Population and Development Review*, 39(1):97–130, 2013.
- Tania Barham. Enhancing cognitive functioning: Medium-term effects of a health and family planning program in Matlab. *American Economic Journal: Applied Economics*, 4(1):245–73, 2012.
- Tania Barham and Randall Kuhn. Staying for benefits: The effect of a health and family planning program on out-migration patterns in Bangladesh. *Journal of Human Resources*, 49(4):982–1013, 2014.
- Tania Barham, Brachel Champion, Andrew D Foster, Jena D Hamadani, Warren C Jochem, Gisella Kagy, Randall Kuhn, Jane Menken, Abdur Razzaque, Elisabeth Dowling Root, et al. Thirty-five years later: Long-term effects of the Matlab maternal and child health/family planning program on older women's well-being. *Proceedings of the National Academy of Sciences*, 118(28):e2101160118, 2021a.
- Tania Barham, Gisella Kagy, Brachel Champion, and Jena Hamadani. Early childhood health and family planning: Long-term and intergenerational effects on human capital. April 2021b.
- Tania Barham, Randall Kuhn, and Patrick S Turner. No place like home: Long-run impacts of early child health and family planning on labor and migration outcomes. *Journal of Human Resources*, 2023.
- Robert J Barro and Gary S Becker. Fertility choice in a model of economic growth. *Econometrica: journal of the Econometric Society*, pages 481–501, 1989.
- Jere R Behrman and Mark R Rosenzweig. Caveat emptor: Cross-country data on education and the labor force. *Journal of Development Economics*, 44(1):147–171, 1994.
- Sonia Bhalotra and Damian Clarke. The twin instrument: Fertility and human capital investment. *Journal of the European Economic Association*, 18(6):3090–3139, 2020.

- David E Bloom, David Canning, and JP Sevilla. Economic growth and the demographic transition. Technical report, National Bureau of Economic Research Cambridge, Mass., USA, 2001.
- David E Bloom, David Canning, Günther Fink, and Jocelyn E Finlay. Fertility, female labor force participation, and the demographic dividend. *Journal of Economic Growth*, 14:79–101, 2009.
- Nicholas Bloom, Charles I Jones, John Van Reenen, and Michael Webb. Are ideas getting harder to find? *American Economic Review*, 110(4):1104–1144, 2020.
- Ester Boserup. *The conditions of agricultural growth: The economics of agrarian change under population pressure*. George Allen Unwin Ltd., 1965.
- Francisco J Buera and Joseph P Kaboski. Scale and the origins of structural change. *Journal of Economic Theory*, 147(2):684–712, 2012.
- Francisco J Buera and Ezra Oberfield. The global diffusion of ideas. *Econometrica*, 88(1): 83–114, 2020.
- Francisco J Buera, Joseph P Kaboski, and Yongseok Shin. Finance and development: A tale of two sectors. *American Economic Review*, 101(5):1964–2002, 2011.
- Francisco J Buera, Joseph P Kaboski, and Yongseok Shin. The macroeconomics of microfinance. *Review of Economic Studies*, 88(1):126–161, 2021.
- Francesco Caselli and Wilbur John Coleman. The US structural transformation and regional convergence: A reinterpretation. *Journal of Political Economy*, 109(3):584–616, 2001.
- Tiago Cavalcanti, Georgi Kocharkov, and Cezar Santos. Family planning and development: Aggregate effects of contraceptive use. *The Economic Journal*, 131(634):624–657, 2021.
- Shoumitro Chatterjee and Tom Vogl. Escaping Malthus: Economic growth and fertility change in the developing world. *American Economic Review*, 108(6):1440–67, 2018.
- T Terry Cheung. Schooling, skill demand, and differential fertility in the process of structural transformation. *American Economic Journal: Macroeconomics*, 15(4):305–330, 2023.
- Uttam K Chowdhury, Bhajan K Biswas, T Roy Chowdhury, Gautam Samanta, Badal K Mandal, Gautam C Basu, Chitta R Chanda, Dilip Lodh, Khitish C Saha, Subhas K Mukherjee, et al. Groundwater arsenic contamination in Bangladesh and West Bengal, India. *Environmental Health Perspectives*, 108(5):393–397, 2000.

- Lee A Craig and Thomas Weiss. Rural agricultural workforce by county, 1800 to 1900. Technical report, University of Kansas, 1998. URL <https://eh.net/database/u-s-agricultural-workforce1800-1900/>.
- Clément De Chaisemartin and Xavier d’Haultfoeuille. Two-way fixed effects estimators with heterogeneous treatment effects. *American Economic Review*, 110(9):2964–2996, 2020.
- Clément De Chaisemartin and Xavier d’Haultfoeuille. Difference-in-differences estimators of intertemporal treatment effects. *Review of Economics and Statistics*, pages 1–45, 2024.
- Clément de Chaisemartin, Diego Ciccia, Xavier D’Haultfoeuille, Felix Knau, Mélitine Malézieux, and Doulo Sow. `Did_multiplegt_dyn`: Stata module to estimate event-study difference-in-difference (did) estimators in designs with multiple groups and periods, with a potentially non-binary treatment that may increase or decrease multiple times. Technical report, Boston College Department of Economics, 2024.
- Matthew J Delventhal, Jesús Fernández-Villaverde, and Nezih Guner. Demographic transitions across time and space. Technical report, National Bureau of Economic Research, 2021.
- Steven N Durlauf, Paul A Johnson, and Jonathan RW Temple. Growth econometrics. *Handbook of economic growth*, 1:555–677, 2005.
- Julio J Elías, Nicola Lacetera, Mario Macis, and Paola Salardi. Economic development and the regulation of morally contentious activities. *American Economic Review*, 107(5):76–80, 2017.
- Pablo Fajgelbaum and Stephen J Redding. Trade, structural transformation, and development: Evidence from argentina 1869–1914. *Journal of political economy*, 130(5):1249–1318, 2022.
- Farid Farrokhi and Heitor S Pellegrina. Trade, technology, and agricultural productivity. *Journal of Political Economy*, 131(9):2509–2555, 2023.
- Vincent Fauveau. *Matlab: Women, Children and Health*. Dhaka; ICDDR, B, 1994.
- Oded Galor. From stagnation to growth: unified growth theory. *Handbook of economic growth*, 1:171–293, 2005.
- Oded Galor. The demographic transition: causes and consequences. *Cliometrica*, 6(1):1–28, 2012.

- Oded Galor and David N Weil. The gender gap, fertility, and growth. *American Economic Review*, 86(3):374, 1996.
- Oded Galor and David N Weil. Population, technology, and growth: From Malthusian stagnation to the demographic transition and beyond. *American Economic Review*, 90(4): 806–828, 2000.
- Gino Gancia and Fabrizio Zilibotti. Technological change and the wealth of nations. *Annual Review of Economics*, 1(1):93–120, 2009.
- Douglas Gollin and Richard Rogerson. Productivity, transport costs and subsistence agriculture. *Journal of Development Economics*, 107:38–48, 2014.
- Douglas Gollin, Stephen L Parente, and Richard Rogerson. The food problem and the evolution of international income levels. *Journal of Monetary Economics*, 54(4):1230–1255, 2007.
- Douglas Gollin, David Lagakos, Xiao Ma, and Shraddha Mandi. The dynamics of agricultural productivity gaps: An open-economy perspective. Technical report, National Bureau of Economic Research, 2025.
- Jeremy Greenwood and Ananth Seshadri. The US demographic transition. *American Economic Review*, 92(2):153–159, 2002.
- Berthold Herrendorf, James A Schmitz, Jr, and Arilton Teixeira. The role of transportation in us economic development: 1840–1860. *International Economic Review*, 53(3):693–716, 2012.
- Hugo Hopenhayn, Julian Neira, and Rish Singhania. From population growth to firm demographics: Implications for concentration, entrepreneurship and the labor share. *Econometrica*, 90(4):1879–1914, 2022.
- Douglas H Huber and Atiqur Rahman Khan. Contraceptive distribution in bangladesh villages: The initial impact. *Studies in Family Planning*, 10(8/9):246–253, 1979.
- icddr,b. Matlab 1974 census, 1974.
- icddr,b. Health and demographic surveillance system - Matlab, 1982.
- Guido W Imbens and Jeffrey M Wooldridge. Recent developments in the econometrics of program evaluation. *Journal of Economic Literature*, 47(1):5–86, 2009.

- Charles I Jones. The end of economic growth? Unintended consequences of a declining population. *American Economic Review*, 112(11):3489–3527, 2022.
- Shareen Joshi and T Paul Schultz. Family planning as an investment in development: Evaluation of a program’s consequences in Matlab, Bangladesh. *Yale University Economic Growth Center Discussion Paper*, (951), 2007.
- Shareen Joshi and T. Paul Schultz. Family planning and women’s and children’s health: Long-term consequences of an outreach program in Matlab, Bangladesh. *Demography*, 50(1):149–180, 2013.
- Michael A. Koenig, Mehrab Ali Khan, Bogdan Wojtyniak, John D. Clemens, Jyotsnamoy Chakraborty, Vincent Fauveau, James F. Phillips, Jalaluddin Akbar, and Uday S. Barua. Impact of measles vaccination on childhood mortality in rural Bangladesh. *Bulletin of the World Health Organization*, 68(4):441, 1990.
- Simon Kuznets. Quantitative aspects of the economic growth of nations: II. Industrial distribution of national product and labor force. *Economic Development and Cultural Change*, 5(S4):1–111, 1957.
- David Lagakos. Urban-rural gaps in the developing world: Does internal migration offer opportunities? *Journal of Economic Perspectives*, 34(3):174–192, 2020.
- David Lagakos, Ahmed Mushfiq Mobarak, and Michael E Waugh. The welfare effects of encouraging rural–urban migration. *Econometrica*, 91(3):803–837, 2023.
- Joanna N Lahey. Birthing a nation: The effect of fertility control access on the nineteenth-century demographic transition. *Journal of Economic History*, 74(2):482–508, 2014.
- Joanna N Lahey and Marianne H Wanamaker. Effects of restrictive abortion legislation on cohort mortality evidence from 19th century law variation. *Journal of Public Economics*, 243:105329, 2025.
- Oksana M Leukhina and Stephen J Turnovsky. Population size effects in the structural development of England. *American Economic Journal: Macroeconomics*, 8(3):195–229, 2016.
- W. Arthur Lewis. Economic development with unlimited supplies of labour. *The Manchester School*, 22(2):139–191, 1954.
- Hongbin Li and Junsen Zhang. Do high birth rates hamper economic growth? *Review of Economics and Statistics*, 89(1):110–117, 2007.



- Shelly Lundberg and Elaina Rose. The effects of sons and daughters on men’s labor supply and wages. *Review of Economics and Statistics*, 84(2):251–268, 2002.
- Thomas R. Malthus. *An Essay on the Principle of Population*. Online Library of Liberty, reprint, 1798. URL <https://oll.libertyfund.org/titles/malthus-an-essay-on-the-principle-of-population-1798-1st-ed>.
- John McMillan and Christopher Woodruff. The central role of entrepreneurs in transition economies. *Journal of Economic Perspectives*, 16(3):153–170, 2003.
- Jane Menken and James F. Phillips. Population change in a rural area of Bangladesh, 1967–87. *The Annals of the American Academy of Political and Social Science*, 510(1):87–101, 1990.
- Caitlin Knowles Myers. The power of abortion policy: Reexamining the effects of young women’s access to reproductive control. *Journal of Political Economy*, 125(6):2178–2224, 2017.
- L Rachel Ngai, Claudia Olivetti, and Barbara Petrongolo. Gendered change: 150 years of transformation in US hours. Technical report, National Bureau of Economic Research, 2024.
- James F. Phillips, Wayne S. Stinson, Shushum Bhatia, Makhlisur Rahman, and Jyotsnamoy Chakraborty. The demographic impact of the family planning–health services project in Matlab, Bangladesh. *Studies in Family Planning*, pages 131–140, 1982.
- Tommaso Porzio, Federico Rossi, and Gabriella V. Santangelo. The human side of structural transformation. *American Economic Review*, 112(8):2774–2814, 2022.
- O Rahman, J Menken, A Foster, C Peterson, MN Khan, R Kuhn, and P Gertler. The Matlab health and socio-economic survey: Overview and user’s guide, 1999, 1999.
- Mark R Rosenzweig and Junsen Zhang. Do population control policies induce more human capital investment? Twins, birth weight and China’s “one-child” policy. *Review of Economic Studies*, 76(3):1149–1174, 2009.
- Theodore W. Schultz. *The Economic Organization of Agriculture*. McGraw-Hill Book Company, Inc., 1953.
- Michael Spasi. Evolving comparative advantage, sectoral linkages, and structural change. *Journal of Monetary Economics*, 103:75–87, 2019.

- Holger Strulik. Contraception and development: A unified growth theory. *International Economic Review*, 58(2):561–584, 2017.
- Trevor Tombe. The missing food problem: Trade, agriculture, and international productivity differences. *American Economic Journal: Macroeconomics*, 7(3):226–258, 2015.
- United Nations. World population prospects 2024: Summary of results. Technical Report UN DESA/POP/2024/TR/NO. 9, United Nations Department of Economic and Social Affairs, Population Division, 2024.
- Timothy Uy, Kei-Mu Yi, and Jing Zhang. Structural change in an open economy. *Journal of Monetary Economics*, 60(6):667–682, 2013.
- Marianne H Wanamaker. Industrialization and fertility in the nineteenth century: Evidence from south carolina. *Journal of Economic History*, 72(1):168–196, 2012.
- Gail A Wasserman, Xinhua Liu, Faruque Parvez, Habibul Ahsan, Diane Levy, Pam Factor-Litvak, Jennie Kline, Alexander van Geen, Vesna Slavkovich, Nancy J LoIacono, et al. Water manganese exposure and children’s intellectual function in Araihaazar, Bangladesh. *Environmental Health Perspectives*, 114(1):124–129, 2006.
- Asger M Wingender. Structural transformation in the 20th century: Additional data documentation. Available online at [https://drive.google.com/file/d/1yRdz9YYGpY2abz5b0Q\\_vl9IngnlQyDRb/view](https://drive.google.com/file/d/1yRdz9YYGpY2abz5b0Q_vl9IngnlQyDRb/view), 2014a.
- Asger Moll Wingender. Structural transformation in the 20th century: A new database on agricultural employment around the world. *Available at SSRN 2533360*, 2014b.

# Appendix

## A Theoretical Appendix

In this section, we provide several extensions to our simple baseline model from Section 2.

### A.1 Adding Intermediate Inputs

Assume the production function in agriculture is

$$Q_a = A_a Z_a^{\theta_z} L_a^{\theta_\ell} T_a^{1-\theta_z-\theta_\ell},$$

and in manufacturing, it is

$$Q_m = A_m Z_m^\alpha (L_m h)^{1-\alpha}, \quad (\text{A.1})$$

where  $Z_a$  and  $Z_m$  are imported intermediate inputs used in each sector. The exogenous price of this input is  $p_z$ . One can think of the intermediate inputs as imported capital in the long-run (in which capital is fully adjustable) or as materials used in production.

The first order conditions imply that

$$\frac{w}{p_z} = \frac{\theta_\ell}{\theta_z} \frac{Z_a}{L_a} = \frac{1-\alpha}{\alpha} \frac{Z_m}{L_m}.$$

The wage is then

$$w = (p_m A_m)^{\frac{1}{1-\alpha}} (1-\alpha) \left( \frac{\alpha}{p_z} \right)^{\frac{\alpha}{1-\alpha}} h$$

and the agricultural employment share is

$$\frac{L_a^*}{L} = \left[ \frac{(p_a A_a)^{\frac{1}{1-\theta_z}} \theta_\ell \theta_z^{\frac{\theta_z}{1-\theta_z}} T^{\frac{1-\theta_z-\theta_\ell}{1-\theta_z}}}{p_z^{\frac{\theta_z}{1-\theta_z}} (p_m A_m)^{\frac{1}{1-\alpha}} (1-\alpha) \left( \frac{\alpha}{p_z} \right)^{\frac{\alpha}{1-\alpha}} h} \right]^{\frac{1-\theta_z}{1-\theta_\ell-\theta_z}} \frac{1}{L}.$$

As in the baseline model,  $\frac{\partial L_a/L}{\partial L} < 0$  and  $\frac{\partial L_a/L}{\partial h} < 0$ .

### A.2 Adding Intermediate Inputs and CES Functional Form

In Section A.1 we assumed that the elasticity of substitution between labor and intermediate inputs is equal to one. It may be more realistic, however, to allow for a substitution elasticity different than one, as suggested by Herrendorf et al. (2015) and Boppart et al. (2023).

Production of the manufacturing good is the same in Equation (A.1). Production of the agricultural good follows a hybrid Cobb-Douglas/Constant Elasticity of Substitution (CES) production process which requires land  $T_a$ , labor  $L_a$ , and imported intermediate inputs  $Z_a$ :

$$Q_a = A_a \left[ \omega Z_a^{\frac{\epsilon-1}{\epsilon}} + (1-\omega) L_a^{\frac{\epsilon-1}{\epsilon}} \right]^{\frac{\theta\epsilon}{\epsilon-1}} T_a^{1-\theta} \quad (\text{A.2})$$

where  $Q_a$  is the quantity of agricultural goods produced, and  $A_a$  is Hicks-neutral agricultural productivity.  $\epsilon > 0$  is the elasticity of substitution between intermediate inputs and labor, and the parameters  $\omega$  and  $\theta$  are between 0 and 1.  $\omega$  governs the relative productivity of  $Z_a$  relative to  $L_a$ , while  $1 - \theta$  is the revenue share accruing to landowners.

The marginal product of labor in agriculture is

$$MPL_a = A_a (1-\omega) \theta L_a^{-\frac{1}{\epsilon}} \left[ \cdot \right]^{\frac{\theta\epsilon}{\epsilon-1}-1} T_a^{1-\theta},$$

where  $[\cdot]$  is the CES portion of equation (A.2). A key determinant of the wage is the quantity of the fixed factor,  $T_a$ , available. Given a fixed amount of land  $T_a$ , as the number of workers allocated to agriculture  $L_a$  increases, the returns to that labor decline.

In the manufacturing sector, the marginal product is

$$MPL_m = A_m (1-\alpha) \left( \frac{Z_m}{L_m} \right)^\alpha h^{1-\alpha},$$

where wages serve to pull workers in when human capital rises.

### A.2.1 Equilibrium

Since we are considering a small open economy, prices of goods are exogenous and determined by world markets. Profit maximization implies that the value of marginal products across sectors equal the wage  $w$ :

$$p_a MPL_a = w = p_m MPL_m$$

which determines the equilibrium wage,

$$w^* = (1-\alpha) (p_m A_m)^{\frac{1}{1-\alpha}} \left( \frac{\alpha}{p_z} \right)^{\frac{\alpha}{1-\alpha}} h, \quad (\text{A.3})$$

which is rising in the price of manufacturing goods  $p_m$ , manufacturing productivity  $A_m$ , and human capital  $h$ . In contrast, wages are falling in the price of intermediate inputs  $p_z$ . Intuitively, due to the substitutability of workers with imported inputs, firms are able to

maintain zero profits only when wages fall as the price of inputs rises.

The equilibrium wage plus land market clearing ( $T_a = T$ , where  $T$  is the aggregate endowment of land) determine the equilibrium share of labor working in agriculture:

$$\frac{L_a^*}{L} = \left( \Lambda \frac{\left[ \left( \frac{\omega}{1-\omega} \right)^\epsilon \left( \frac{w^*}{p_z} \right)^{\epsilon-1} + 1 \right]^{\frac{\theta\epsilon}{\epsilon-1}-1}}{\left( \frac{\alpha}{1-\alpha} \frac{w^*}{p_z} \right)^\alpha h^{1-\alpha}} \right)^{\frac{1}{1-\theta}} \frac{T}{L}, \quad (\text{A.4})$$

where  $\Lambda \equiv \frac{(1-\omega)^{\frac{\theta\epsilon}{\epsilon-1}} \theta}{1-\alpha} \frac{p_a}{p_m} \frac{A_a}{A_m}$  is a collection of exogenous parameters.

The fraction of workers employed in the factory sector can be obtained using the labor market clearing constraint,  $L = L_a + L_m$ .

Furthermore, the equilibrium per-household use of intermediate inputs in agriculture is

$$\frac{Z_a^*}{L} = \left( \frac{\omega}{1-\omega} \frac{w^*}{p_z} \right)^\epsilon \frac{L_a^*}{L}. \quad (\text{A.5})$$

### A.2.2 Comparative Statics

We next assess the effect of the demographic transition on sectoral employment. As with our baseline model, we find contrasting effects of each channel on agricultural employment. The model generates two key empirical predictions:

- (a) A relatively lower population  $L$  will result in an increased share of workers employed in the agricultural sector.
- (b) The sign of the effect of a rise in average human capital  $h$  on the share of workers employed in the agricultural sector depends on parameter values, as detailed below.

In particular, we find that in the model  $\frac{\partial L_a/L}{\partial h} < 0$  if and only if the below parameter restriction holds:

$$\frac{\left( \frac{\omega}{1-\omega} \right)^\epsilon \left( \frac{w^*}{p_z} \right)^{\epsilon-1}}{\left( \frac{\omega}{1-\omega} \right)^\epsilon \left( \frac{w^*}{p_z} \right)^{\epsilon-1} + 1} < \frac{1 - \epsilon(1 - \theta)}{p_z} \quad (\text{A.6})$$

The term  $\left( \frac{\omega}{1-\omega} \right)^\epsilon$  captures the productivity of  $Z$  relative to  $L$  in the agriculture sector and  $(w^*/p_z)^{\epsilon-1}$  captures the corresponding relative cost of inputs. The product of these two terms,  $\left( \frac{\omega}{1-\omega} \right)^\epsilon (w^*/p_z)^{\epsilon-1}$ , is equal to 1 when agriculture is produced using a Cobb-Douglas production function. That is, when  $\omega = 0.5$  and  $\epsilon = 1$ , as we assume for the manufacturing

sector. Hence, the term on the left of inequality (A.6) indexes the difficulty of substituting between  $Z$  and  $L$  in agriculture relative to manufacturing and must be between 0 and 1.

On the right-hand side, the term  $\epsilon(1 - \theta)$  measures the ease of substituting between  $Z$  and  $L$  in agriculture, weighted by the importance of land  $1 - \theta$ . This term equals 1 in manufacturing, in which  $\epsilon = 1$  and the land cost share is 0. Hence the numerator  $1 - \epsilon(1 - \theta)$  measures the difference between the weighted ease of substituting between  $Z$  and  $L$  between the manufacturing and agricultural sectors. The denominator  $p_z$  scales this difference by the cost of input  $Z$ .

Inequality (A.6) is most likely to hold (and hence  $\frac{\partial L_a/L}{\partial h} < 0$ ) when a country is less developed: when manufacturing productivity and human capital are low, so long as the  $\epsilon > 1$ , as suggested by the estimates of Herrendorf et al. (2015) and Boppart et al. (2023). Hence, the net long-run effect of the demographic transition on industrialization is ambiguous for developing countries, and depends on the parameters which preferences and production, and hence the relative strength of the human capital versus population size effects.

For the most developed countries, on the other hand, the model suggests that both forces shift labor into the agricultural sector. This is because human capital increases essentially free-up labor to move into agriculture one labor is sufficiently productive.<sup>18</sup>

### A.3 Partially Closed Economy

The effect of population on structural transformation necessarily depends on whether the economy is open or closed (Matsuyama 1992). Our baseline model assumes a fully open economy, but the predicted effect of population size on agricultural employment share would be reversed if the economy were fully closed, as the food problem dominates. In this section, consider the implications of nesting both closed and open economy cases by introducing trade costs.

No arbitrage implies that if sector  $x$  is exporting, then  $P_x^W = P_x\tau$  otherwise, if sector  $x$  is importing, then  $P_x^W = P_x/\tau$ .

The price  $P_x$  is knowable with the following steps: (i) solve for the price  $P_x^{closed}$  when the economy is closed. (ii) compare  $P_x^{closed}$  to  $P_x^W$  to determine if  $x$  is exported or imported. (iii) set  $P_x = P_x\tau$  if  $x$  is exported or  $P_x = P_x/\tau$  if  $x$  is imported.

---

<sup>18</sup>Because developed countries are on the technological frontier, an endogenous growth model may be more appropriate however, which may instead pull workers into the innovative sector.

Hence, the equilibrium price of sector  $x$ 's output is

$$P_x^* = \begin{cases} P_x^{cl} & \text{if } \tau P_x^W \geq P_x^{cl} \geq P_x^W / \tau \text{ (closed)} \\ \tau P_x^W & \text{if } \tau P_x^W < P_x^{cl} \text{ (importing)} \\ P_x^W / \tau & \text{if } P_x^W / \tau > P_x^{cl} \text{ (exporting)} \end{cases} \quad (\text{A.7})$$

where  $P_x^W$  is the world price,  $P_x^{cl}$  is the prevailing local price given a closed economy, and  $\tau$  is the iceberg trade cost.

If the agricultural sector is closed, consistent with Matsuyama (1992), the predicted effect of population size reverses. A larger population induces a higher agricultural employment share in order to feed the population. If the agricultural sector imports or exports, then consistent with our baseline model a greater population induces a lower agricultural employment share.

## B Data Appendix

### B.1 U.S. State-level Data Construction

This section summarizes the data construction decisions taken by Craig and Weiss (1998) to generate agricultural employment to population ratios for each U.S. state between 1800 and 1900.

States appear in the data over time as the U.S. expanded westward and the Census Bureau began covering them. Our interest is in computing the agricultural employment to population ratio over time. The denominator, the total population, is readily available from the U.S. Census.<sup>19</sup>

The numerator, the agricultural workforce, is trickier to compute and requires some assumptions and imputations. Craig and Weiss (1998) focus on rural agricultural employment;<sup>20</sup> we further restrict our focus to male workers, since unpaid work, which was disproportionately done by women, was substantially undermeasured by the Census (Goldin 1990; Ngai et al. 2024). Agricultural employment is measured for those age 10 and up.

The approach to imputing male agricultural employment differs between the antebellum and post-civil war periods. For censuses conducted between 1870 and 1900, agricultural work was imputed based on each respondent's occupation. For occupations with an ambigu-

---

<sup>19</sup>See, for example, <https://www2.census.gov/library/publications/decennial/1850/1850a/1850a-02.pdf> for the state population between 1800 and 1850.

<sup>20</sup>This is comparable to the use of urbanization rates as a proxy for nonagricultural employment shares by Wingender (2014b).

ous sector, specifically “laborers not otherwise specified,” [Craig and Weiss \(1998\)](#) used the 1910 census’s proportion of such workers by industry among workers living in rural areas. 1910 was the first census wave in which industry was asked of respondents. This approach contrasts with the IPUMS’s construction of a consistent industry variable (`ind1950`) across census waves, in which they do not impute an industry for “non classifiable” workers.<sup>21</sup> As a robustness check, we show very similar results to our baseline in Figure [D.3](#) when using the 1850 to 1900 full count censuses from IPUMS ([Ruggles et al. 2024](#)). We stick with the data of [Craig and Weiss \(1998\)](#) as our baseline to maximize comparability and consistency in data construction across census waves.

For censuses conducted between 1800 and 1860, we sum free and enslaved farm workforces. [Craig and Weiss \(1998\)](#) directly observe state-level male agricultural employment for those 16 and older in 1850 and 1860. They impute free male agricultural employment among those age 10–15 using both the fraction residing in rural areas as of 1860 and the fraction of rural residents employed in agriculture within the 10–15 age group. For enslaved people within the same age group, [Craig and Weiss \(1998\)](#) allocate a fraction of rural enslaved people age 10 and older to agriculture according to patterns observed in the 1820 and 1840 censuses, following [Weiss \(1992\)](#). Again, we emphasize that results are little changed when using the complete count census waves from 1850 onwards by [Ruggles et al. \(2024\)](#).

For the 1820 and 1840 waves, [Weiss \(1992\)](#) notes in his appendix several shortcomings in census tabulations. These include nonexhaustive industry coverage, the exclusion of some enslaved people, and seemingly arbitrary variation in demographic and industry coverage across states related to local census supervisors’ discretion. This leads to the presence of many outliers. Weiss corrects these outliers using the following procedure. First, he identifies counties within the same census year that exhibited reliable coverage, or looks to other census years when coverage was more reliable. In many cases, Weiss uses observations from these reliable counties/years to impute values for unreliable counties.

For census years 1800, 1810, and 1830, additional imputations were done by [Weiss \(1992\)](#). These relied primarily on the 1820 and 1840 waves, but, in some cases, also the 1860 census.

## B.2 Matlab Health and Socioeconomic Survey

For the Matlab Health and Socioeconomic Survey (MHSS) waves, respondents were tracked throughout Bangladesh and intensive efforts were made to interview international migrants and difficult-to-track migrants when they returned to the study area to visit family. Migrants were intensively interviewed around Eid celebrations if they were visiting family in Matlab.

---

<sup>21</sup>See [https://usa.ipums.org/usa-action/variables/IND1950#comparability\\_section](https://usa.ipums.org/usa-action/variables/IND1950#comparability_section).



Most data were collected in face-to-face interviews, so are not proxy reports. Fifteen percent of men in our sample, international migrants living abroad, were contacted using a phone survey.

The Demographic Surveillance System data are collected bi-weekly or monthly and allow determination of exact birth dates and birth place, key inputs to our assignment of treatment status described in Section 5.2.

In neither the MHSS1 nor the MHSS2 surveys, were respondents asked directly about their non-agricultural industry of employment. Therefore, we must classify industry using indirect measures. Moreover, because the survey questions differed between waves, we take slightly different approaches to industry classification for each survey round.

**MHSS1.** We consider a job to be in the agriculture sector if the job was on a farm or in fishing. In particular, the agricultural occupations are, “agriculturalist,” “agricultural laborer,” “fisherman,” “husking/boiling/drying paddy,” “goat rearing,” “duck/hen rearing,” and “produce vegetables/fruits.” All other occupations are non-agricultural.

Unfortunately, occupation codes alone do not provide sufficient information about sector of employment. For example, we are unable to allocate most white-collar professions (e.g., accountant) or generic “laborers” to a sector.

**MHSS2.** As in the MHSS1, a job is in the agriculture sector if the job was on a farm or in fishing.

An individual is considered to work in manufacturing if they work in a factory (in answer to a question about the respondent’s place of work), their occupation code matches to factory work, or their work in a craftmaking occupation. Craftmaking occupations are: sheet and structural metal supervisor, moulders and welders, blacksmith or tool maker, handicraft worker (e.g. jewelry, fabrics, pottery, printing, hand embroidery), food processing (e.g. baker, butcher, dried fish maker), woodworking (e.g. treaters, cabinet makers, furniture maker), or garment and related trade workers (e.g. tailor, seamstress, machine embroidery, upholstery, tanning).

We consider a job in the service sector if the occupation corresponds to a purely service occupation, such as healthcare (nurses, doctors, traditional healer), teaching, transportation (rickshaw or van drivers, bus drivers), retail (e.g., shopkeepers), personal service providers (e.g., hair cutters or cobblers), maintenance workers (e.g., plumbers, electricians, appliance repair), social work, or hospitality (e.g., restaurant or hotel workers). In addition, we consider all other occupations to be in the service sector as long as the respondent did not report that the work occurred on a farm or in a factory.

## C Maternal and Child Health and Family Planning Program Details

In this appendix, we describe in greater detail the Matlab Maternal and Child Health and Family Planning program, or MCH-FP. Program interventions were phased in over time. Between 1977 and 1981, program services focused on family planning and maternal health through the provision of modern contraception, tetanus toxoid vaccinations for pregnant women, and iron folic acid tablets for women in the last trimester of pregnancy (Bhatia et al. 1980). Take up of tetanus toxoid was low during this period at less than 30 percent of eligible women (Chen et al. 1983). Health workers provided a variety of family planning methods in the homes of the beneficiaries including condoms, oral pills, vaginal foam tablets, and injectables. In addition, beneficiaries were informed about fertility control services provided by the project in health clinics such as intrauterine device insertion, tubectomy, and menstrual regulation. During these visits the female health worker also provided counseling on contraception, nutrition, hygiene, and breastfeeding, and motivated women to continue using contraceptives. These services were supported by followup and referral systems to manage side effects and continued use of contraceptives (Phillips et al. 1982; Fauveau 1994).

Program implementation followed the planned timeline, and uptake was rapid as evidenced by the takeup of two key interventions: family planning and the measles vaccine (see Figure D.6). Prior to the program, the contraceptive prevalence rate (CPR) for married women 15–49 was low ( $< 6$  percent) in both the treatment and comparison areas. The CPR reached 30 percent in the treatment area in the first year, then rose steadily, reaching almost 50 percent by 1988. Because contraceptives were also provided by the government, the CPR increased in the comparison area, but not as quickly, and remained below 20 percent in 1988. By 1990, there was still a 20 percentage point difference in the CPR rate between the two areas. The measles vaccination rate rose to 60 percent in 1982 after it was introduced in half of the treatment area, and in 1985 when it was introduced in the other half as shown in Figure D.6. By 1988, coverage rates for children aged 12–23 months living in the treatment area were 93 percent for the vaccine against tuberculosis, 83 percent for all three doses of the vaccines against diphtheria, pertussis, tetanus, and polio, 88 percent for measles, and 77 percent across all three major immunizations (icddr, 2007). Government services did not regularly provide measles vaccination for children until around 1989, so the comparison area was an almost entirely unvaccinated population (Koenig et al. 1991). Nationally, measles vaccination for children under the age of five was less than 2 percent in 1986 (Khan 1998) and was below 40 percent in the comparison area in 1990 (Fauveau 1994).

## Online Appendix References

- Tania Barham, Randall Kuhn, and Patrick S Turner. No place like home: Long-run impacts of early child health and family planning on labor and migration outcomes. *Journal of Human Resources*, 2023.
- Shushum Bhatia, W Henry Mosley, Abu SG Faruque, and Jotsnamoy Chakraborty. The Matlab family planning-health services project. *Studies in Family Planning*, 11(6):202–212, 1980.
- David E Bloom, David Canning, Günther Fink, and Jocelyn E Finlay. Fertility, female labor force participation, and the demographic dividend. *Journal of Economic Growth*, 14:79–101, 2009.
- Timo Boppart, Patrick Kiernan, Per Krusell, and Hannes Malmberg. The macroeconomics of intensive agriculture. Technical report, National Bureau of Economic Research, 2023.
- Lincoln C Chen, Makhlisur Rahman, Stan D’Souza, J Chakraborty, and AM Sardar. Mortality impact of an MCH-FP program in Matlab, Bangladesh. *Studies in Family Planning*, pages 199–209, 1983.
- Lee A Craig and Thomas Weiss. Rural agricultural workforce by county, 1800 to 1900. Technical report, University of Kansas, 1998. URL <https://eh.net/database/u-s-agricultural-workforce1800-1900/>.
- Clément de Chaisemartin, Diego Ciccia, Xavier D’Haultfoeulle, Felix Knau, Mélitine Malézieux, and Doulo Sow. Did\_multiplet\_dyn: Stata module to estimate event-study difference-in-difference (did) estimators in designs with multiple groups and periods, with a potentially non-binary treatment that may increase or decrease multiple times. Technical report, Boston College Department of Economics, 2024.
- Matthew J Delventhal, Jesús Fernández-Villaverde, and Nezih Guner. Demographic transitions across time and space. Technical report, National Bureau of Economic Research, 2021.
- Vincent Fauveau. *Matlab: Women, Children and Health*. Dhaka; ICDDR, B, 1994.
- Claudia Goldin. *Understanding the gender gap: An economic history of American women*. National Bureau of Economic Research, 1990.

- Berthold Herrendorf, Christopher Herrington, and Akos Valentinyi. Sectoral technology and structural transformation. *American Economic Journal: Macroeconomics*, 7(4):104–133, 2015.
- icddr,b. Health and demographic surveillance system - Matlab, 2007.
- M Mahmud Khan. *Expanded Program on Immunization in Bangladesh: Cost, cost-effectiveness, and financing estimates*. Number 24. Partnerships for Health Reform, 1998. URL <http://www.path.org/vaccineresources/files/Abt-PNACH278.pdf>.
- Michael A Koenig, Vincent Fauveau, and Bogdan Wojtyniak. Mortality reductions from health interventions: The case of immunization in Bangladesh. *Population and Development Review*, pages 87–104, 1991.
- Joanna N Lahey. Birthing a nation: The effect of fertility control access on the nineteenth-century demographic transition. *Journal of Economic History*, 74(2):482–508, 2014.
- Joanna N Lahey and Marianne H Wanamaker. Effects of restrictive abortion legislation on cohort mortality evidence from 19th century law variation. *Journal of Public Economics*, 243:105329, 2025.
- Kiminori Matsuyama. Agricultural productivity, comparative advantage, and economic growth. *Journal of Economic Theory*, 58(2):317–334, 1992.
- L Rachel Ngai, Claudia Olivetti, and Barbara Petrongolo. Gendered change: 150 years of transformation in US hours. Technical report, National Bureau of Economic Research, 2024.
- James F. Phillips, Wayne S. Stinson, Shushum Bhatia, Makhlisur Rahman, and Jyotsnamoy Chakraborty. The demographic impact of the family planning–health services project in Matlab, Bangladesh. *Studies in Family Planning*, pages 131–140, 1982.
- Steven Ruggles, Matt A. Nelson, Matthew Sobek, Catherine A. Fitch, Ronald Goeken, J. David Hacker, Evan Roberts, and J. Robert Warren. Ipums ancestry full count data: Version 4.0 [dataset], 2024. URL <https://doi.org/10.18128/D014.V4.0>.
- United Nations. Classification of individual consumption according to purpose (COICOP). Department of economic and social affairs, statistical papers series m no. 99, 2018.
- Thomas Weiss. US labor force estimates and economic growth, 1800-1860. In Robert E. Gallman and John Joseph Wallis, editors, *American Economic Growth and Standards of Living before the Civil War*, pages 19–78. University of Chicago Press, 1992.

Asger Moll Wingender. Structural transformation in the 20th century: A new database on agricultural employment around the world. *Available at SSRN 2533360*, 2014.

## **D Additional Tables and Figures**

Table D.1: Baseline Balance

	Treatment Area		Comparison Area		Difference in Means		
	(1) Mean	(2) SD	(3) Mean	(4) SD	(5) Diff.	(6) T-stat	(7) Diff./SD
Land size 1982 (decimals)	11.62	(16.00)	11.00	(16.21)	-0.62	-0.69	-0.03
Bari size	8.06	(5.51)	8.86	(5.99)	0.80	1.72	0.08
Family size	6.87	(2.95)	7.01	(2.94)	0.15	1.12	0.04
Wall tin or tin mix (=1)	0.314	(0.460)	0.317	(0.462)	0.003	0.13	0.01
Tin roof (=1)	0.832	(0.370)	0.828	(0.375)	-0.005	-0.22	-0.01
Number of boats	0.673	(0.623)	0.666	(0.631)	-0.007	-0.15	-0.01
Owns a lamp (=1)	0.613	(0.485)	0.652	(0.474)	0.039	1.05	0.06
Owns a watch (=1)	0.149	(0.354)	0.160	(0.364)	0.011	0.54	0.03
Owns a radio (=1)	0.080	(0.270)	0.081	(0.271)	0.001	0.05	0.00
Number of rooms (per capita)	0.206	(0.097)	0.212	(0.102)	0.007	1.43	0.06
Number of cows	1.29	(1.73)	1.45	(1.70)	0.16	1.75	0.08
Latrine (=1)	0.863	(0.342)	0.821	(0.381)	-0.042	-1.56	-0.06
Drinking water, tubewell (=1)	0.163	(0.367)	0.322	(0.465)	0.159	4.09	0.20
Drinking water, tank (=1)	0.321	(0.465)	0.393	(0.486)	0.072	1.35	0.05
HH head < 2 years education	0.610	(0.485)	0.564	(0.493)	-0.046	-1.81	-0.07
HH head works in agriculture (=1)	0.591	(0.489)	0.595	(0.488)	0.005	0.15	0.01
HH head works in fishing (=1)	0.063	(0.241)	0.055	(0.227)	-0.008	-0.51	-0.02
HH head works in business (=1)	0.096	(0.293)	0.126	(0.330)	0.030	1.37	0.07
HH head age	46.24	(13.39)	47.18	(13.73)	0.95	1.76	0.07
HH head spouse < 2 years education	0.844	(0.338)	0.808	(0.368)	-0.035	-1.67	-0.07
HH head spouse's age	36.08	(10.35)	36.75	(10.90)	0.67	1.25	0.05
1996 HH head Muslim	0.959	(0.199)	0.839	(0.367)	-0.119	-3.47	-0.34

*Notes:* The sample includes MHSS1 households where the household head could be traced back to the DSS area before 1977 and that had at least one household member or descendant who appeared in the MHSS2 survey. Unless otherwise noted, household characteristics come from the 1974 census. MHSS1 household baseline (1974) characteristics are traced back from the MHSS1 head. Standard deviations (SD) are clustered at the treatment village level. There are 1,176 treatment area households and 1,308 comparison area households. Standard deviations used in Column (7) come from comparison area households.

Table D.2: ITT Effects of Consumption Shares by Sector

	(1)	(2)	(3)
	Agriculture	Manufacturing	Services
Treatment	-0.01 (0.01)	-0.01 (0.00)	0.02* (0.01)
% chg. rel. to mean	-2.6	-2.6	6.0
Mean	0.52	0.19	0.25
Baseline controls	Y	Y	Y
Embankment control	Y	Y	Y
Observations	2013	2013	2013

*Notes:* The table presents estimates of the effect of the MCH-FP on 2014 consumption outcomes aggregated to the MHSS1 household-level. Consumption within MHSS2 households is summed within the MHSS1 household. The sample is restricted to MHSS1 households where MHSS2 consumption was observed within at least one household. Consumption goods classified into sectors based on [United Nations \(2018\)](#). \*, \*\*, and \*\*\* denote statistical significance at the 10%, 5%, and 1% levels, respectively.

Table D.3: ITT Effects of MCH-FP on Long-term Entrepreneurship and Employer Characteristics: Household-Level

	Entrepreneurship by Sector					
	(1)	(2)	(3)	(4)	(5)	(6)
	Agriculture	Manufacturing	Services	Ever worked in factory	Currently works in factory	Works at employer with > 100 employees
Treatment	0.04*** (0.01)	0.00 (0.00)	0.01 (0.01)	-0.02** (0.01)	-0.02*** (0.01)	-0.02*** (0.01)
% chg. rel. to mean	18.2	3.5	4.8	-14.7	-21.3	-23.0
Mean	0.22	0.02	0.14	0.15	0.08	0.08
Baseline controls	Y	Y	Y	Y	Y	Y
Embankment control	Y	Y	Y	Y	Y	Y
Observations	2484	2484	2484	2484	2484	2484

*Notes:* The table presents estimates of the effect of the MCH-FP on 2014 outcomes aggregated to the MHSS1 household level. Each dependent variable is the share of household members exhibiting the described behavior. \*, \*\*, and \*\*\* denote statistical significance at the 10%, 5%, and 1% levels, respectively.



Table D.4: ITT Effects of MCH-FP on Household Size and Composition

	(1) Number of Men Age 24–34	(2) Number of Women Age 24–34
Treatment	-0.15*** (0.04)	-0.09** (0.04)
% chg. rel. to mean	-15.2	-10.2
Mean	0.98	0.90
Baseline controls	Y	Y
Embankment control	Y	Y
Observations	2484	2484

*Notes:* The table presents estimates of the effect of the MCH-FP on 2014 outcomes at the MHSS1 household-level. Variable means refer to the comparison group. Standard errors are clustered by pre-program village. \*, \*\*, and \*\*\* denote statistical significance at the 10%, 5%, and 1% levels, respectively.

Table D.5: ITT Effects of MCH-FP on Farming and Land Ownership

	MHSS1 (1996)		MHSS2 (2012-2014)	
	(1) =1 if household farms	(2) Acres owned per cap.	(3) =1 if household farms	(4) Acres owned per cap.
Treatment	0.006 (0.027)	-0.058 (0.045)	0.029* (0.017)	-0.002 (0.006)
% chg. rel. to mean	0.8	-16.5	3.6	-1.5
Mean	0.68	0.35	0.80	0.10
Baseline controls	Y	Y	Y	Y
Embankment control	Y	Y	Y	Y
Observations	2525	2518	2484	2482

*Notes:* The table presents estimates of equation 5 for outcomes aggregated to the MHSS1 household-level and measured in 1996 (columns 1 and 2) and 2014 (columns 3 and 4). Variable means refer to the comparison area. Standard errors are clustered by the 1996 household head's pre-program village. \*, \*\*, and \*\*\* denote statistical significance at the 10%, 5%, and 1% levels, respectively.

Table D.6: ITT Effects of MCH-FP on Work Time Shares by Sector: Household-Level, Robustness

	MHSS1 (1996)		MHSS2 (2012–2014)		
	(1)	(2)	(3)	(4)	(5)
	Agriculture	Non-agricultural	Agriculture	Manufacturing	Services
<i>Panel A: Full Sample</i>					
Treatment	-0.003 (0.022)	0.011 (0.022)	0.039*** (0.014)	-0.024* (0.014)	-0.010 (0.018)
% chg. rel. to mean	-0.5	3.0	18.7	-12.2	-2.0
Mean	0.68	0.36	0.21	0.20	0.48
Observations	2534	2534	2484	2484	2484
<i>Panel B: Within 3km of Treatment Border</i>					
Treatment	-0.008 (0.027)	0.010 (0.027)	0.029* (0.017)	-0.007 (0.017)	-0.012 (0.023)
% chg. rel. to mean	-1.2	2.9	13.4	-3.9	-2.6
Mean	0.71	0.34	0.22	0.18	0.48
Observations	1718	1718	1686	1686	1686
<i>Panel C: Only Muslim Households</i>					
Treatment	-0.006 (0.023)	0.014 (0.023)	0.033** (0.015)	-0.024* (0.014)	-0.004 (0.018)
% chg. rel. to mean	-0.8	4.0	16.0	-12.1	-0.8
Mean	0.68	0.35	0.21	0.20	0.48
Observations	2286	2286	2241	2241	2241
<i>Panel D: Exclude Main City</i>					
Treatment	0.004 (0.024)	0.005 (0.024)	0.054*** (0.014)	-0.034** (0.014)	-0.009 (0.020)
% chg. rel. to mean	0.6	1.5	25.7	-16.3	-1.9
Mean	0.68	0.35	0.21	0.21	0.47
Observations	2064	2064	2020	2020	2020

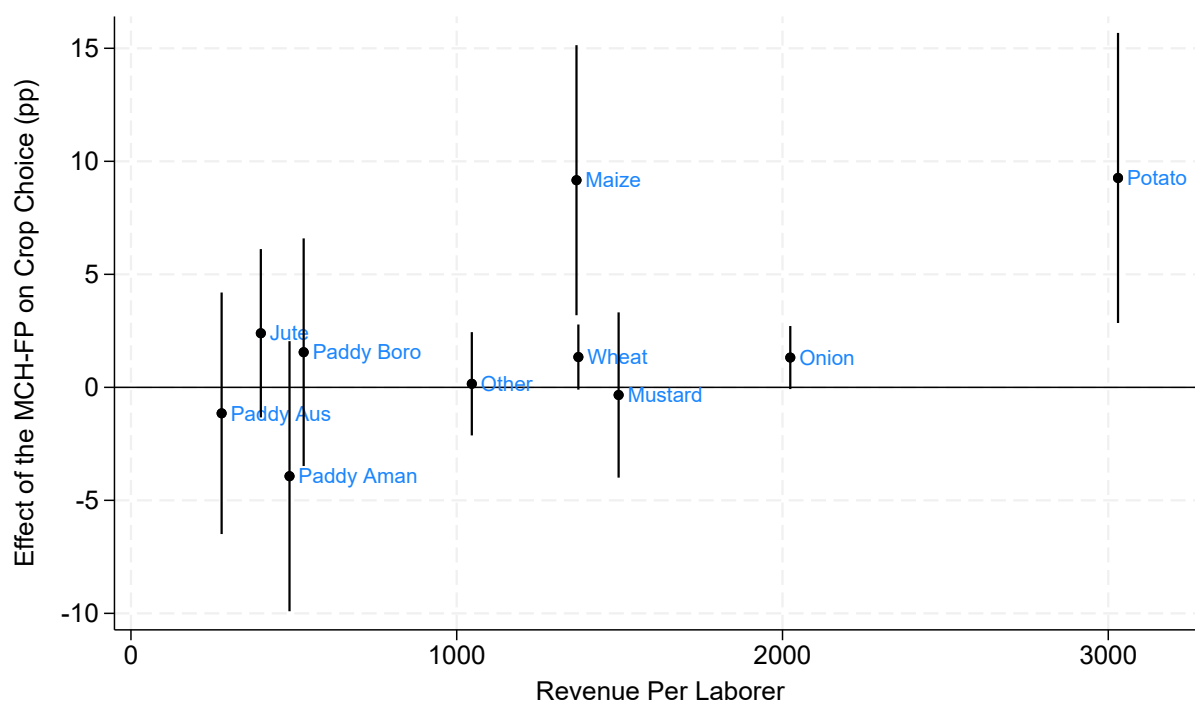
*Notes:* The table presents estimates of equation 5 for outcomes at the MHSS1 household-level. Variable means refer to the comparison group. Standard errors are clustered by the 1996 household head's pre-program village. Columns (1) and (2) measure outcomes in the 1996 MHSS1, while Columns (3) through (5) measure outcomes in the 2012–2015 MHSS2. MHSS1 outcomes are the share of working months in the year in which household members could work allocated to each sector. MHSS2 outcomes are the share of hours worked by sector within the household. Panel A uses the full sample of households. Panels B and C restrict the sample to households from villages within 3km of the treatment border and Muslim households, respectively. Panel D excludes households whose pre-program village is within the Matlab town boundary. See Appendix B.2 for more details on how we classify workers into sectors. Due to changes between survey waves, sectors are constructed differently in the MHSS1 and MHSS2, and therefore are not directly comparable. \*, \*\*, and \*\*\* denote statistical significance at the 10%, 5%, and 1% levels, respectively.

Table D.7: ITT Effects of MCH-FP on Long-term Work Hour Shares by Sector and Urbanicity: Household-Level

	(1)	(2)	(3)	(4)	(5)	(6)
	Urban	Urban	Urban	Rural	Rural	Rural
	Agriculture	Manufacturing	Services	Agriculture	Manufacturing	Services
Treatment	0.008	-0.028***	-0.008	0.031**	0.006	-0.002
	(0.005)	(0.010)	(0.020)	(0.014)	(0.009)	(0.017)
% chg. rel. to mean	205.6	-18.4	-3.3	15.4	12.7	-0.7
Mean	0.00	0.15	0.24	0.20	0.05	0.24
Baseline controls	Y	Y	Y	Y	Y	Y
Embankment control	Y	Y	Y	Y	Y	Y
Observations	2488	2488	2488	2488	2488	2488

*Notes:* The table presents estimates of equation 5 for outcomes at the MHSS1 household-level. Variable means refer to the comparison group. Standard errors are clustered by the 1996 household head's pre-program village. The dependent variable is the share of hours worked within the household in different sectors and in different locations. See Appendix B.2 for more details on how we classify workers into sectors. Due to changes between survey waves, sectors are constructed differently in the MHSS1 and MHSS2, and therefore are not directly comparable. \*, \*\*, and \*\*\* denote statistical significance at the 10%, 5%, and 1% levels, respectively.

Figure D.1: ITT Effects of MCH-FP on Crop Choice and Average Crop Productivity



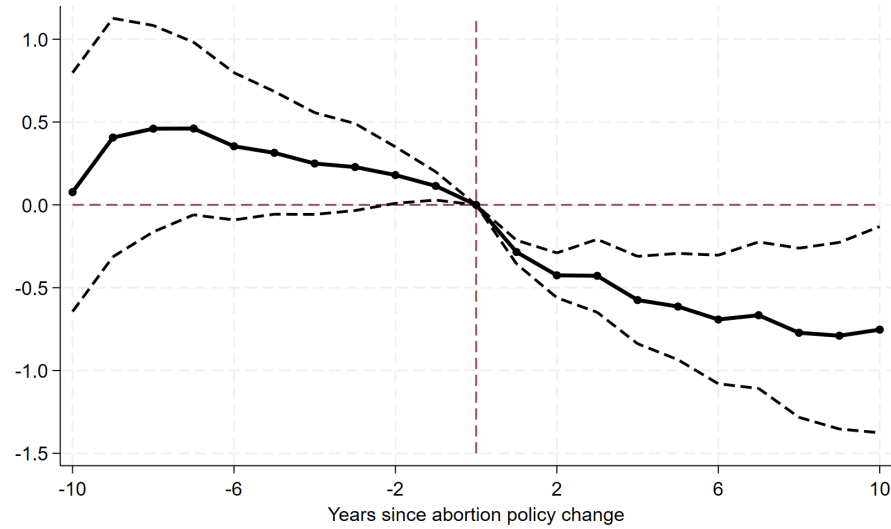
*Notes:* The figure reports estimates of equation 5. The vertical axis reports the ITT effect on whether the household grew the given crop. The horizontal axis reports the average revenue per unit of labor when producing the crop, which comes from XXX. Vertical bars represent the 95% confidence intervals.

Table D.8: ITT Effects of MCH-FP on Revenue and Profits per Acre

	(1) Revenue per acre (min. price)	(2) Revenue per acre (max. price)	(3) Profit per acre (min. price)	(4) Profits per acre (max. price)
Treated	-0.591 (39.52)	-24.74 (143.0)	-10.63 (52.18)	-34.27 (144.3)
% chg. rel. to mean	-0.1	16.0	-1.6	-41.4
Mean	446.13	-154.24	683.45	82.84
Embankment controls	Y	Y	Y	Y
Baseline controls	Y	Y	Y	Y
Estimation method	OLS	OLS	OLS	OLS
Observations	1411	1411	1411	1411

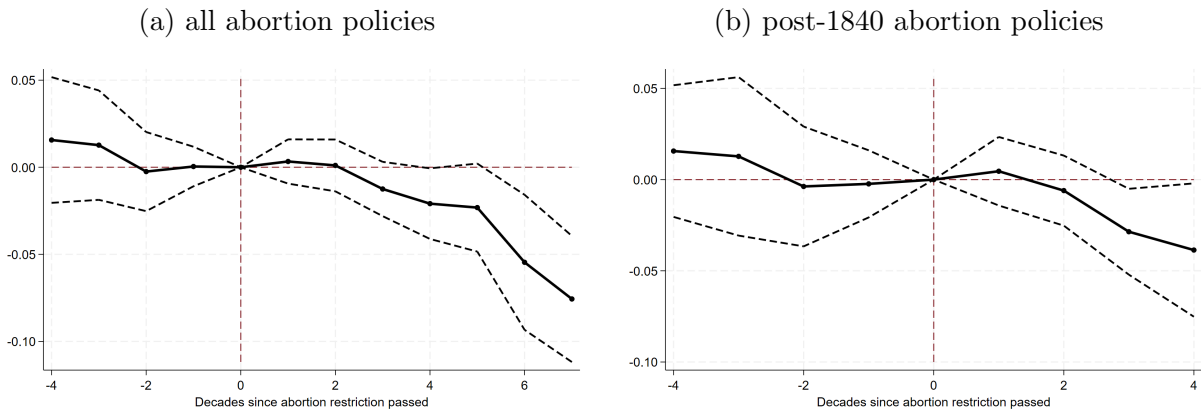
*Notes:* The table presents estimates of the effect of the MCH-FP on 2014 outcomes at the MHSS1 household-level. Standard errors are clustered by pre-program village. Prices derived from the national Bangladeshi statistical yearbooks 2012-2014. Minimum prices are the minimum price listed in the yearbook for a given year within a crop type (e.g., Paddy Aman) amongst all varieties of that crop type (e.g., coarse or fine). Profits net of imputed family farm labor costs. \*, \*\*, and \*\*\* denote statistical significance at the 10%, 5%, and 1% levels, respectively.

Figure D.2: Effect of Abortion Policy Changes on Crude Birth Rate



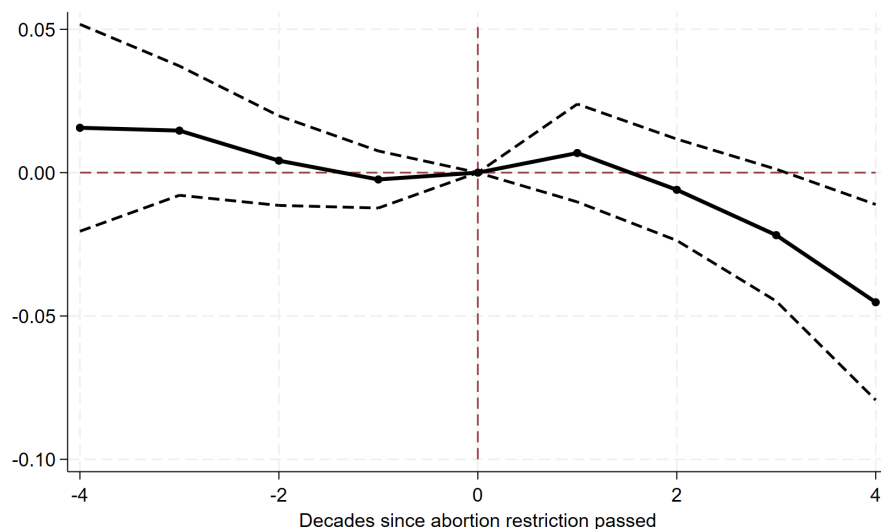
*Notes:* The figure shows event study coefficient estimates for the effect of abortion policy changes on the crude birth rate. 95% confidence intervals depicted with standard errors clustered at the country level. Annual data on crude birth rate come from the World Bank Development Indicators as compiled by [Delventhal et al. \(2021\)](#). Abortion policy change database compiled by [Bloom et al. \(2009\)](#). Estimated using the Stata command `did_multiplegt_dyn` by [de Chaisemartin et al. \(2024\)](#).

Figure D.3: Effect of Abortion Restrictions on Agricultural Employment Share, U.S. States, Full Count Census 1850–1900



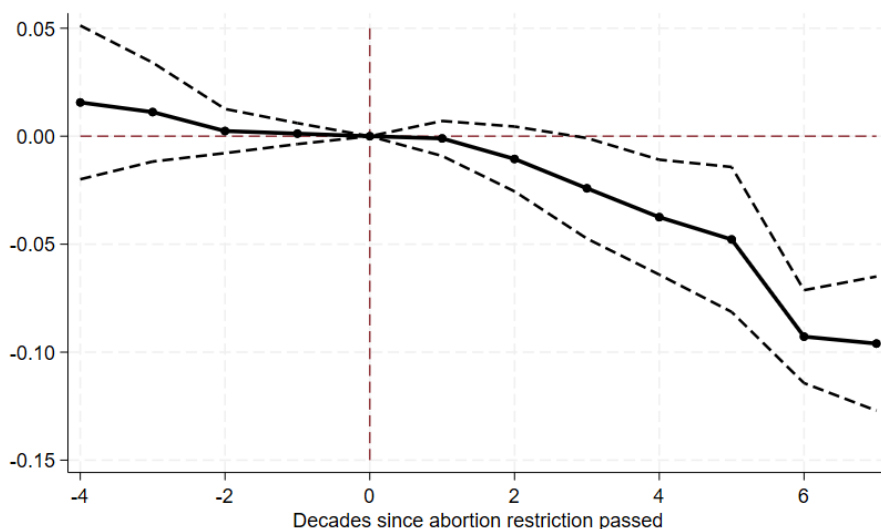
*Notes:* Data on state-level agricultural employment shares 1800–1840 comes from [Craig and Weiss \(1998\)](#). Agricultural employment shares for 1850–1900 computed from [Ruggles et al. \(2024\)](#). Timing of abortion restriction laws come from [Lahey \(2014\)](#) and [Lahey and Wanamaker \(2025\)](#). 95% confidence intervals depicted with standard errors clustered at the state level. Estimated using the Stata command `did_multiplegt_dyn` by [de Chaisemartin et al. \(2024\)](#).

Figure D.4: Effect of Abortion Restrictions (excluding those passed before 1840) on Agricultural Employment Share, U.S. States



*Notes:* Data on state-level agricultural employment shares 1800-1900 comes from [Craig and Weiss \(1998\)](#). Timing of abortion restriction laws come from [Lahey \(2014\)](#) and [Lahey and Wanamaker \(2025\)](#). 95% confidence intervals depicted with standard errors clustered at the state level. Estimated using the Stata command `did_multiplegt_dyn` by [de Chaisemartin et al. \(2024\)](#).

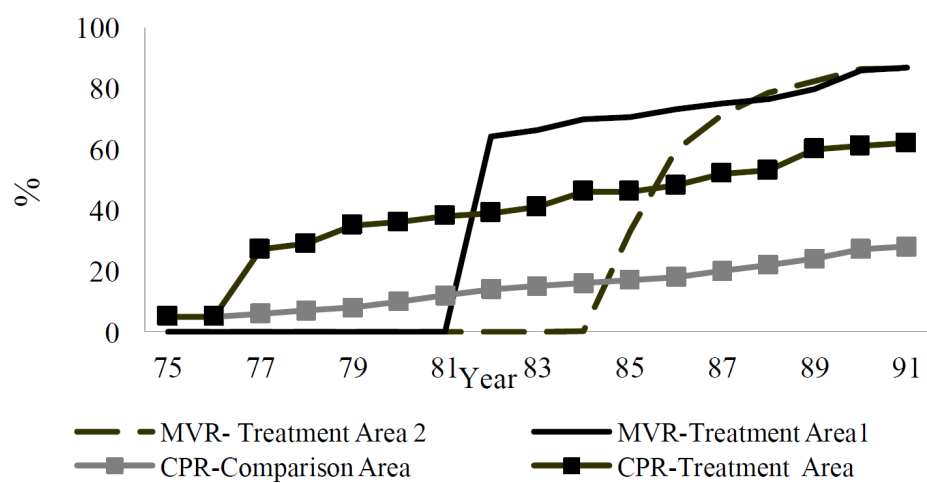
Figure D.5: Effect of Abortion Restrictions on Agricultural Employment Share, U.S. States Observed in 1800 Only



*Notes:* Data on state-level agricultural employment shares 1800-1900 comes from [Craig and Weiss \(1998\)](#). Timing of abortion restriction laws come from [Lahey \(2014\)](#) and [Lahey and Wanamaker \(2025\)](#). 95% confidence intervals depicted with standard errors clustered at the state level, computed via 1,000 bootstrap repetitions. Estimated using the Stata command `did_multiplegt_dyn` by [de Chaisemartin et al. \(2024\)](#).



Figure D.6: Trends in contraceptive prevalence rate (CPR) and measles vaccination rates (MVR) for children 12-59 months by calendar year



Source: Replicated from Figure 2 in [Barham et al. \(2023\)](#).